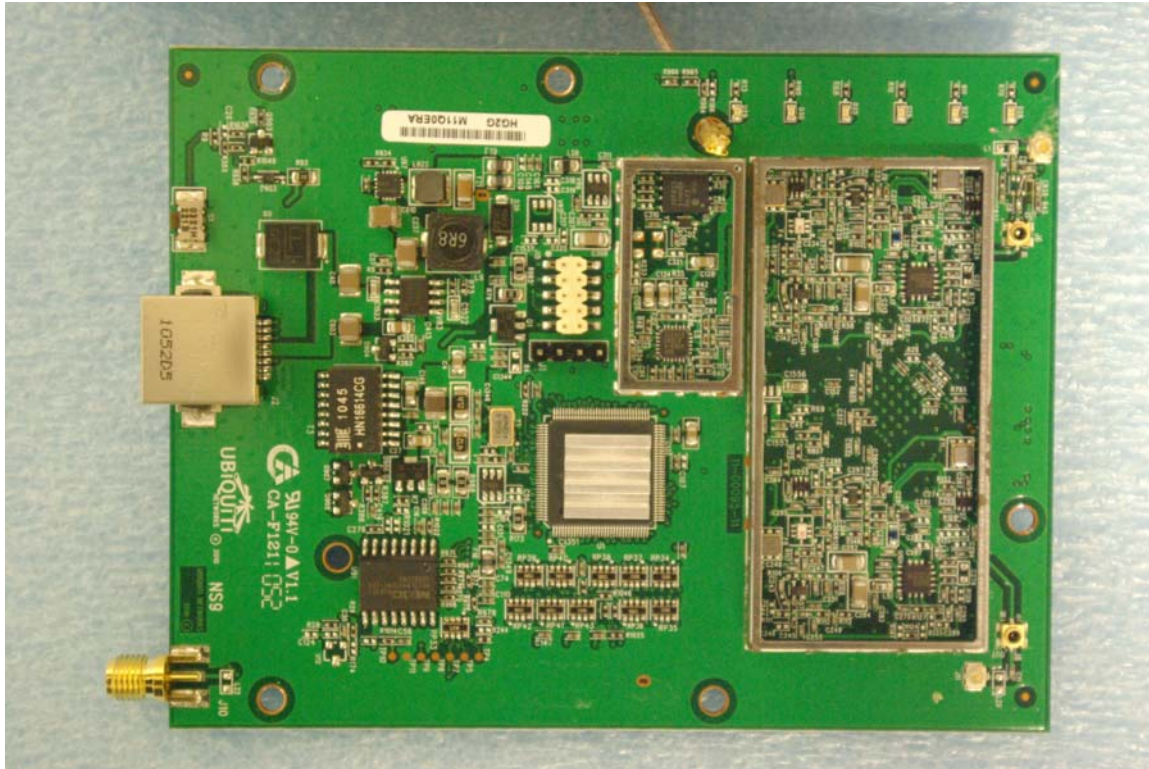
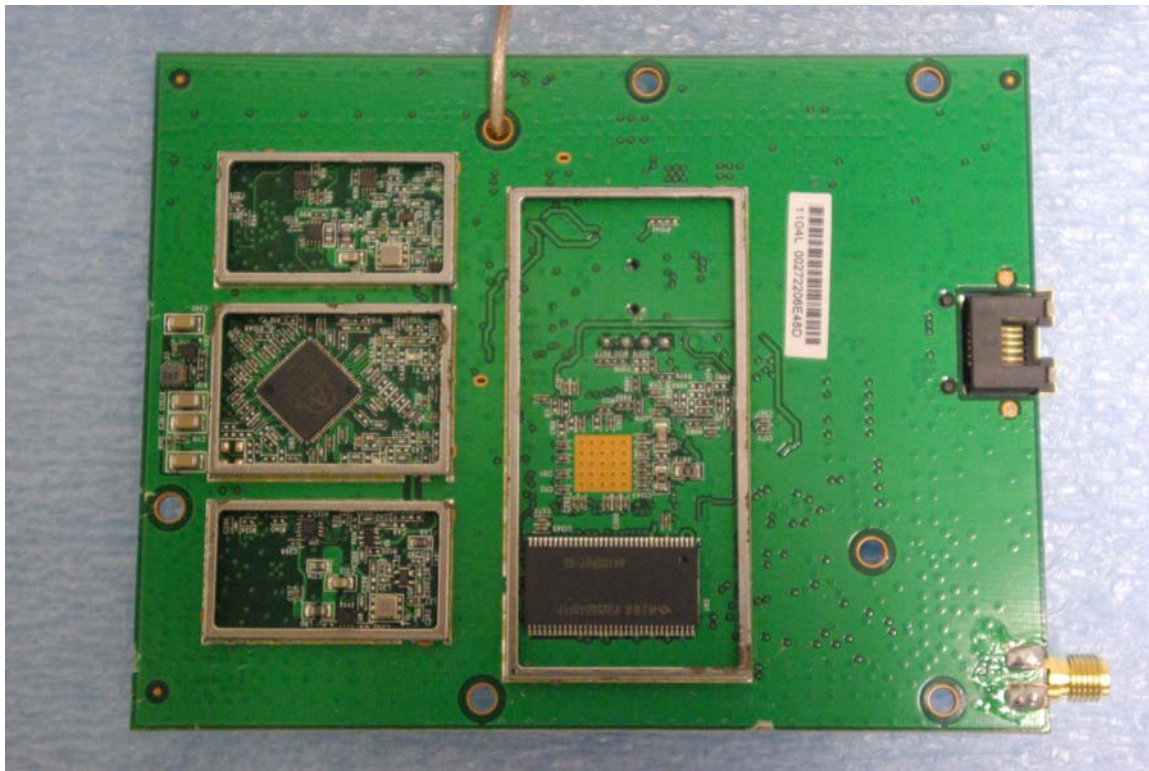


Internal photographs of equipment under test
PCB without shield



Back side of EUT PCB

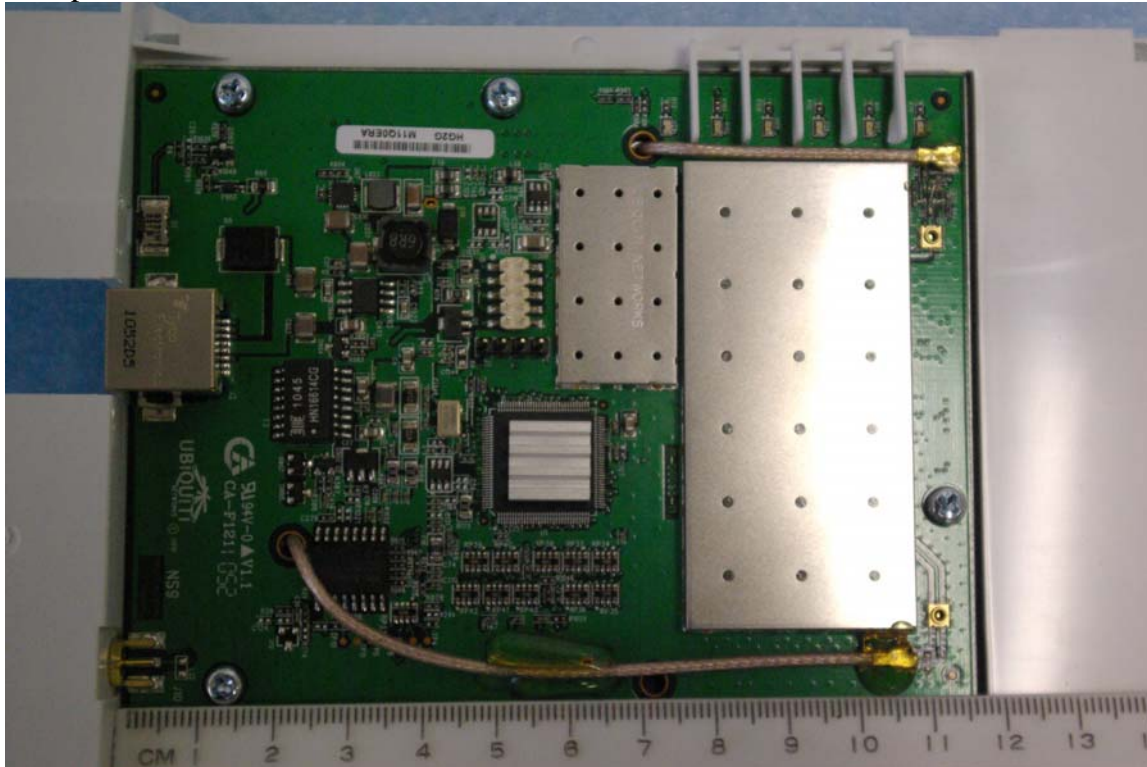


Rogers Labs, Inc.
4405 W. 259th Terrace
Louisburg, KS 66053
Phone/Fax: (913) 837-3214
Revision 1

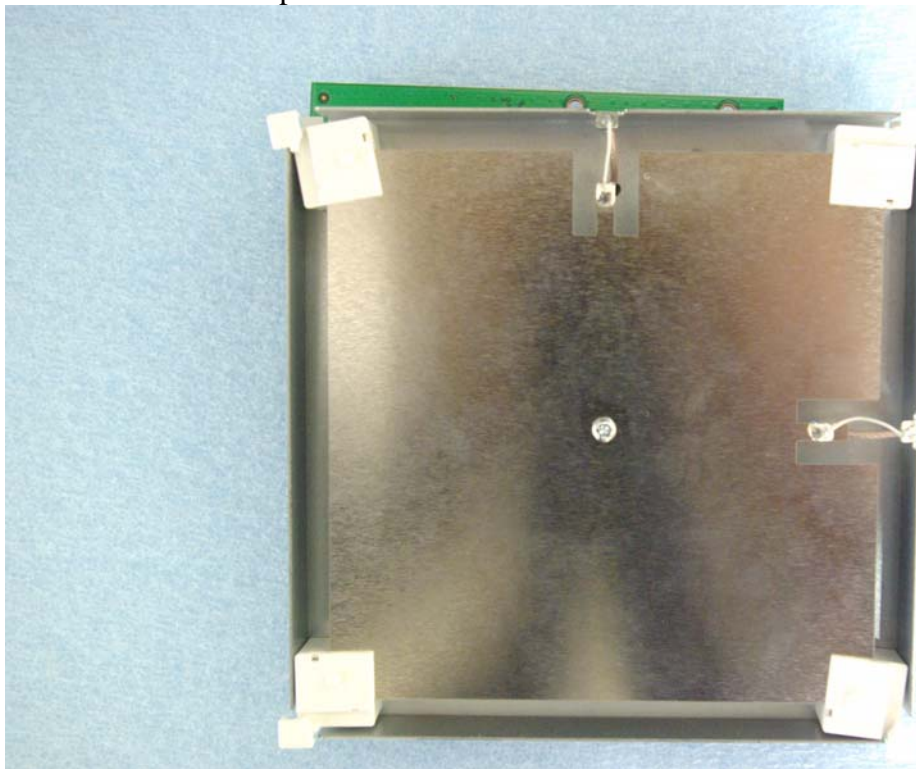
Ubiquiti Networks, Inc.
Model: NanoStation M900
Test #: 110427
Test to: CFR47 (15.247), RSS-210
File: IntPho M900L

SN: 1104L00272206E31D
FCC ID#: SWX-M900L
IC: 6545A-M900L
Date: June 17, 2011
Page 1 of 2

EUT placement in enclosure



Internal Antenna and placement



Rogers Labs, Inc.
4405 W. 259th Terrace
Louisburg, KS 66053
Phone/Fax: (913) 837-3214
Revision 1

Ubiquiti Networks, Inc.
Model: NanoStation M900
Test #: 110427
Test to: CFR47 (15.247), RSS-210
File: IntPho M900L

SN: 1104L00272206E31D
FCC ID#: SWX-M900L
IC: 6545A-M900L
Date: June 17, 2011
Page 2 of 2