

HyperAmp Limited Twelve (12) Month Warranty

HyperAmp products are warranted against defects in workmanship and material for a period of twelve (12) months of purchase by the original purchaser. This warranty also covers damage to the HyperAmp caused by lightning during the warranty period. HyperLink Technologies will repair or replace, at its sole discretion, any HyperAmp product which fails under this warranty. Excluded in this warranty are any products which have failed due to misuse, neglect, accident, improper installation or application. Also excluded are products which have been opened, altered or repaired outside our factory.

Claimants to this warranty must obtain a Return Authorization from the factory prior to shipping back defective equipment. All equipment returned to the factory must be shipped freight prepaid. All freight charges, duties and/or taxes are the responsibility of the customer. HyperLink Technologies shall return repaired or replaced equipment freight prepaid via Ground Service within the 50 U.S. states. Shipment to destinations outside the U.S. is at the expense of customer.

HyperLink Technologies reserves the right to make changes in product materials and specifications without notice.

HyperLink Technologies will not be responsible for any incidental or consequential damages due to the failure or improper operation of any product under this warranty or any implied warranty. Some states do not allow the exclusion or limitation of incidental or consequential damages so the above exclusion or limitation may not apply to you.

This warranty gives you specific legal rights and you have other rights which vary from state to state.

THIS WARRANTY IS EXPRESSLY IN LIEU OF ALL OTHER WARRANTIES, EXPRESSED OR IMPLIED, INCLUDING BUT NOT LIMITED TO THE IMPLIED WARRANTIES OF MERCHANTABILITY AND FITNESS FOR A PARTICULAR PURPOSE.

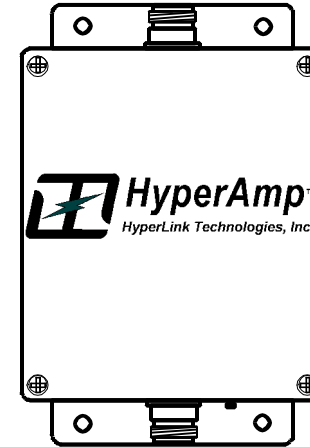
IN NO EVENT SHALL HYPERLINK TECHNOLOGIES BE LIABLE FOR ANY LOSS OF PROFITS, LOSS OF USE, INTERRUPTION OF BUSINESS, OR INDIRECT, SPECIAL OR CONSEQUENTIAL DAMAGES OF ANY KIND.

In no event shall Hyperlink Technologies be liable for damages in an amount greater than the purchase price of the equipment.

HyperAmp™ SE and SX Series

HyperAmp™ 900SE, 2400SE and 2400SX Series
Remote Bilateral Power Amplifiers

Quick Start Guide



Amplifier Kit Contents:

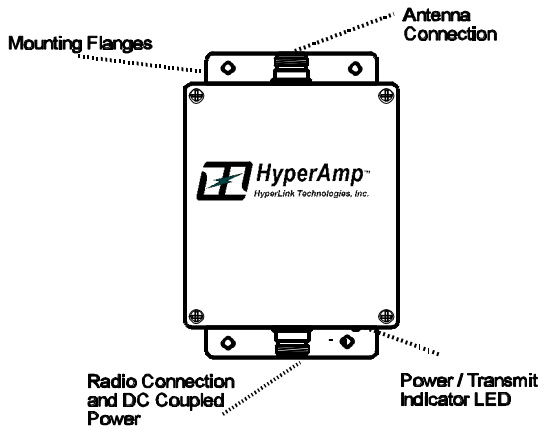
- Remote Amplifier
- DC Power Supply
- Power Cord
- DC Power Injector
- Stainless Steel Mounting Kit
- Sealant Tape



1201 Clint Moore Road
Boca Raton, Florida 33487 U.S.A.
Tel: 561-995-2256 ! Fax: 561-995-2432
EMAIL: sales@hyperlinktech.com
www.hyperlinktech.com

HyperAmp and HyperGain are Trademarks of HyperLink Technologies, Inc.
Copyright © 1994-1999 HyperLink Technologies, Inc. All rights reserved.
HyperAmp is made in the USA. Patents Pending.

Connections and Features



Mounting Flanges: Mounting holes are provided on HyperAmp's mounting flanges for either mast mounting using the included U-bolts, or bolted directly to a bracket or other structure.

Power/Transmit LED: This LED glows GREEN in receive mode when power is applied to the amplifier, and flashes RED when transmitting.

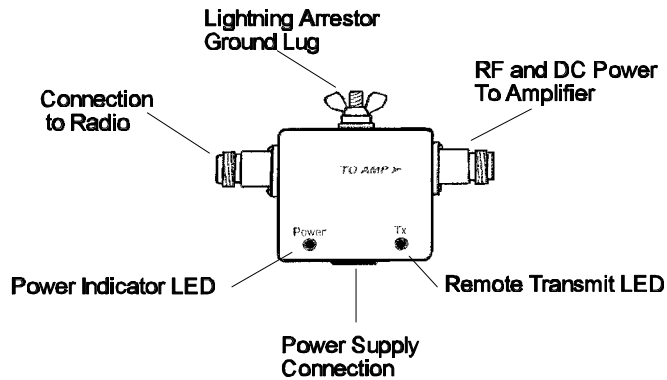
Radio Connection: This connects to the DC Power Injector via the antenna feed cable.

Antenna Connection: This connects to the antenna.

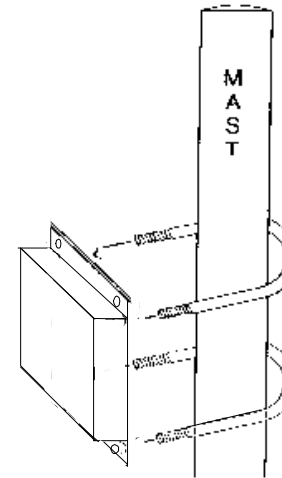
The DC Power Injector

A *DC Power Injector* (also known as a "Bias-T") is an in-line device which "couples" DC power onto a coaxial cable, allowing the cable to carry both RF signals and DC power. The *HyperAmp™ SE* is powered remotely through the coaxial antenna feed cable by way of this device. The DC Power Injector supplied with the *HyperAmp™ SE* unit also provides lightning protection.

The Power Injector provides both Power and Remote Transmit Detect indicator LEDs. The Power Indicator LED provides indication that the DC power supply is functioning. The Remote Transmit Detect indicator detects changes in the DC current traveling through the antenna feed cable supplying the HyperAmp™. When the HyperAmp™ enters the transmit mode this indicator LED will be illuminated, providing positive indication that the system is functioning properly. This indicator typically flashes rapidly while the transmitter is transmitting.



Mounting and Cabling Instructions



The HyperAmp™ SE/SX can be mast mounted using the stainless steel U-bolts included with the unit. Refer to the sketch for proper positioning. Use an open-end wrench to carefully tighten the bolts using the included nuts. Take care not to over-tighten the bolts or cause damage to the RF connectors on the amplifier. Since the amplifier is a sealed unit, these connectors cannot easily be repaired.

Alternately, the unit can be mounted to a flat surface using any of the mounting holes on the unit's mounting flanges.

For best results against lightning damage, attach a ground wire to one of the U-bolts securing the amplifier.

Note: The Amplifier is shipped with plastic protective caps affixed to the RF connectors. These caps should not be removed until after the amplifier is mounted, and you are ready to attach the cabling. In addition to protecting the connector threads, the caps will keep out rain or moisture which can cause deterioration of the connector contacts.

Typical System Configuration

