

Perspective

An Integrated Index: Engrams, Place Cells, and Hippocampal Memory

Travis D. Goode,^{1,2,3,4,7} Kazumasa Z. Tanaka,^{5,7} Amar Sahay,^{1,2,3,4,*} and Thomas J. McHugh^{6,*}

¹Center for Regenerative Medicine, Massachusetts General Hospital, Boston, MA 02114, USA

²Harvard Stem Cell Institute, Cambridge, MA 02138, USA

³Department of Psychiatry, Massachusetts General Hospital, Harvard Medical School, Boston, MA 02114 USA

⁴Broad Institute of Harvard and MIT, Cambridge, MA 02142, USA

⁵Memory Research Unit, Okinawa Institute of Science and Technology Graduate University, Onna-son, Kunigami-gun, Okinawa, Japan

⁶Laboratory for Circuit and Behavioral Physiology, RIKEN Center for Brain Science, Wakoshi, Saitama, Japan

⁷These authors contributed equally

*Correspondence: asahay@mg.harvard.edu (A.S.), thomas.mchugh@riken.jp (T.J.M.)

<https://doi.org/10.1016/j.neuron.2020.07.011>

SUMMARY

The hippocampus and its extended network contribute to encoding and recall of episodic experiences. Drawing from recent anatomical, physiological, and behavioral studies, we propose that hippocampal engrams function as indices to mediate memory recall. We broaden this idea to discuss potential relationships between engrams and hippocampal place cells, as well as the molecular, cellular, physiological, and circuit determinants of engrams that permit flexible routing of information to intra- and extrahippocampal circuits for reinstatement, a feature critical to memory indexing. Incorporating indexing into frameworks of memory function opens new avenues of study and even therapies for hippocampal dysfunction.

Introduction

A few keywords typed into the Google search bar will, more often than not, immediately lead to the exact piece of information we are seeking. While the details of how this magic happens are proprietary, the general idea is transparent; Google has managed to index vast swaths of the internet and uses our search terms to quickly point to the most appropriate information (<https://www.google.com/search/howsearchworks>). The system is surprisingly flexible, using history, context, or location to hone results; completing or anticipating partial bits of information; and finding and separating similar items by detecting small differences. These properties, which underlie both its efficiency and popularity, echo the abilities of the memory systems operating in our own brains, particularly the episodic memory circuits dependent on the hippocampus (Squire et al., 2004; Tulving, 2002). The hippocampus is crucial for the encoding of memory, it is adept at integrating and interpreting contextual cues to drive recall, and it is efficient at both discrimination and association (Maren et al., 2013). Thus, much like how Google works as an index of information, one parsimonious explanation for hippocampal function is that it functions as an index of memories (Guo et al., 2018; Miller and Sahay, 2019; Tanaka, 2020; Tanaka and McHugh, 2018; Tanaka et al., 2018; Tonegawa et al., 2018). This is not a new idea (McClelland et al., 1995; Teyler and DiScenna, 1985, 1986; Teyler and Rudy, 2007); however, recent work has begun to lend direct experimental evidence to this theory and edifying putative, underlying circuit mechanisms. Here, we will explore and examine these findings in depth and discuss possible indexing mechanisms, as well as how these ideas could shape a better understanding of memory processes in both the healthy and diseased brain.

Space and Memory

The discovery of place cells, neurons in the hippocampus that have receptive fields tuned to discrete locations within a context (O'Keefe and Dostrovsky, 1971), revolutionized the experimental approach to studying hippocampal function (Moser et al., 2017). One of the earliest and most influential theories to emerge linking place cell activity and episodic memory was the cognitive map theory (O'Keefe and Nadel, 1978), positing that the primary role of the hippocampus is to provide a spatial framework that permits the location and association of the items and events that constitute a given experience. While the authors suggested that this cognitive map may not be limited to physical space and could be applied to map episodic experience more broadly, place cells and their properties have proved a useful substrate to examine and test these ideas. For example, as different ensembles of neurons are recruited to represent different spatial experiences, the hippocampus could continuously provide a new underlying scaffolding across space (and time) that would allow memories to remain both related and distinct. Subsequent retrieval could then be triggered by a reinstatement of the original spatial map triggered by the cues that define a given context (Wikenheiser and Redish, 2015). Over time, other theoretical models have built on and expanded these ideas, and, as noted in other sections below, have proposed anatomical substrates for hippocampal functions that include novelty detection (Lisman and Otmakhova, 2001; Vinogradova, 2001), rapid encoding, and pattern completion and separation (Kesner and Rolls, 2015; Knierim and Neunuebel, 2016; Nadel and Moscovitch, 1997), as well as their relation to spatial coding. Moreover, frameworks that encompass the place cell data but are not tied to a specific spatial function of the hippocampus have also been described.

These posit that place cells may reflect a broader functionality related to general-purpose sequence generation (Buzsáki and Tingley, 2018) or relational memory (Cohen and Eichenbaum, 1993; Eichenbaum et al., 1994), allowing the extension of both hippocampal memory and physiology (Aronov et al., 2017; MacDonald et al., 2011; Pastalkova et al., 2008) beyond the domain of physical space.

Hand in hand with the growing characterization of place cell physiology, there developed a deeper understanding of the anatomical, behavioral, and computational properties of the hippocampal circuit. This resulted in specific mnemonic functions being linked to the anatomic and physiological properties of discrete subregions of the structure (Fanselow and Dong, 2010; Nadel et al., 2013; Strange et al., 2014). In this framework, the classic model of sequential processing along the trisynaptic loop has the large number and sparse activity of granule cells in the dentate gyrus (DG) providing orthogonalization of similar cortical inputs leading to pattern separation (Hainmueller and Bartos, 2020; Leal and Yassa, 2018; McHugh et al., 2007), the DG providing input to the recurrent CA3 network to facilitate autoassociation and pattern completion (Cayco-Gajic and Silver, 2019; Kesner and Rolls, 2015; Knierim and Neunuebel, 2016; McHugh et al., 2007; Nakazawa et al., 2002), and finally, CA1 broadcasting the results back to the cortex (Soltesz and Losonczy, 2018; Valero and de la Prida, 2018). This framework has served as the backbone of relating place cell activity to memory processing, insofar as place cells may coordinate the pattern separation, completion, and reinstatement properties noted above.

Building on this framework, advances in genetic approaches have led to activity-dependent memory tagging systems in rodent models, which allow for the examination and artificial reactivation or inhibition of distinct memory traces (Josselyn and Tonegawa, 2020). These traces fulfill the properties of the memory engram, a moniker for the physical basis of memory first proposed by zoologist and biologist Richard Semon (Schacter et al., 1978; Semon, 1921), in that they can be viewed as the physical instantiation of an experience registered in enduring changes in synaptic connectivity and physiology of an ensemble of neurons. Tagging systems employed include the tetracycline-regulated transcriptional activation system, in which time-locked expression of actuators such as opsins or chemogenetic receptors are induced via activity-dependent promoters (e.g., c-Fos or Arc-expressing; Liu et al., 2012) or immediate early gene (IEG)-binding elements (Sun et al., 2020), as well as the Cre-ERT (estrogen receptor T2) transcription system (targeted recombination in active populations [TRAP] mice), which utilizes a tamoxifen-sensitive modified estrogen receptor to drive experience-driven expression of Cre-dependent constructs in activated cells (Guenthner et al., 2013). Such methods have allowed for the artificial triggering of memory-related behavior even in contexts where no such behavior would be expected. While these methods are not without their caveats (discussed further in sections below), engram-labeling studies have shown that optogenetic or chemogenetic stimulation or inhibition of excitatory neurons in the DG (e.g., Guo et al., 2018; Lacagnina et al., 2019; Liu et al., 2012), CA3 (e.g., Denny et al., 2014), or CA1 (e.g., Ghandour et al., 2019; Ryan et al., 2015; Tanaka et al., 2014) reinstates or impedes (respectively) behavioral recall of that experience.

While many engram studies have focused on measures of conditioned fear, these and other studies report hippocampal engram-driven behavior for a variety of context-specific behaviors, including place (e.g., Ramirez et al., 2013) or social avoidance (e.g., Zhang et al., 2019), as well as appetitive conditioning and place preference (e.g., Redondo et al., 2014).

These findings raise several key questions. First, how can a small number of experience-tagged hippocampal engram cells, much fewer in fraction than that of active place cells (e.g., Tanaka et al., 2018), encode a complex behavioral experience? Indeed, activation of a very small percentage (2%–3%) of DG granule cells labeled during learning can reproduce context-appropriate behaviors (for examples, see Liu et al., 2012). Further, activation in the DG could harness the pattern completion abilities of the downstream CA3 network to amplify their activity via attractor dynamics (Colgin et al., 2010; Knierim and Neunuebel, 2016) and lead to a robust brain-wide reinstatement of a memory-related ensemble. However, reactivation of a subset of CA1 neurons, which lack recurrent connectivity, can also trigger behavioral reinstatement and presumably memory recall (e.g., Ryan et al., 2015). It is plausible that downstream activation of the entorhinal cortex (EC) and/or re-entrant excitation of the DG and CA3 add these features, thereby functioning like a recurrent network, although experimental evidence supporting this interpretation is lacking.

Additionally, 50 years of hippocampal physiology in rodents has revealed that place cell activity is exquisitely structured across not only space but also time (Howard and Eichenbaum, 2015). During exploration, the dominant theta oscillation in the hippocampal local field potential (LFP) organizes ensembles of place cells with spatially adjacent receptive fields into sequences, expressed on the timescale of a single theta cycle of ~125 ms (Burgess and O'Keefe, 2011). These sequences can be re-expressed during sharp-wave ripples (SWRs) that occur during pauses in movement on an even shorter timescale, compressed into fast events lasting only 10s of milliseconds (Foster, 2017). This precise temporal arrangement of activity has made the gap between place-cell- and engram-based memory studies difficult to bridge, as the latter have demonstrated that simultaneous optogenetic activation of ensembles of neurons in temporal and spatial patterns that are not observed under natural physiological conditions are sufficient to evoke behaviors mimicking memory recall. One can interpret this gap in the temporal dynamics between optically induced behavioral reinstatement and place cell activity as reflecting the dispensability of these temporal pattern for behaviors driven by contextual recognition, or perhaps this disconnect could simply be due to technical limitations in the place cell recording, as the retrieval of a hippocampal-dependent memory can occur very rapidly and in the absence of the exploration needed to drive extensive place cell activity, precluding a robust sampling of activity. For instance, when rodents receive a footshock immediately after placement in a previously exposed chamber, context exploration may be minimal, yet animals successfully retrieve the contextual memory and associate it with shock, resulting in context-dependent behavior during subsequent memory tests (Wiltgen et al., 2001). One possibility is that reinstatement of even a single place field is sufficient for memory reinstatement.

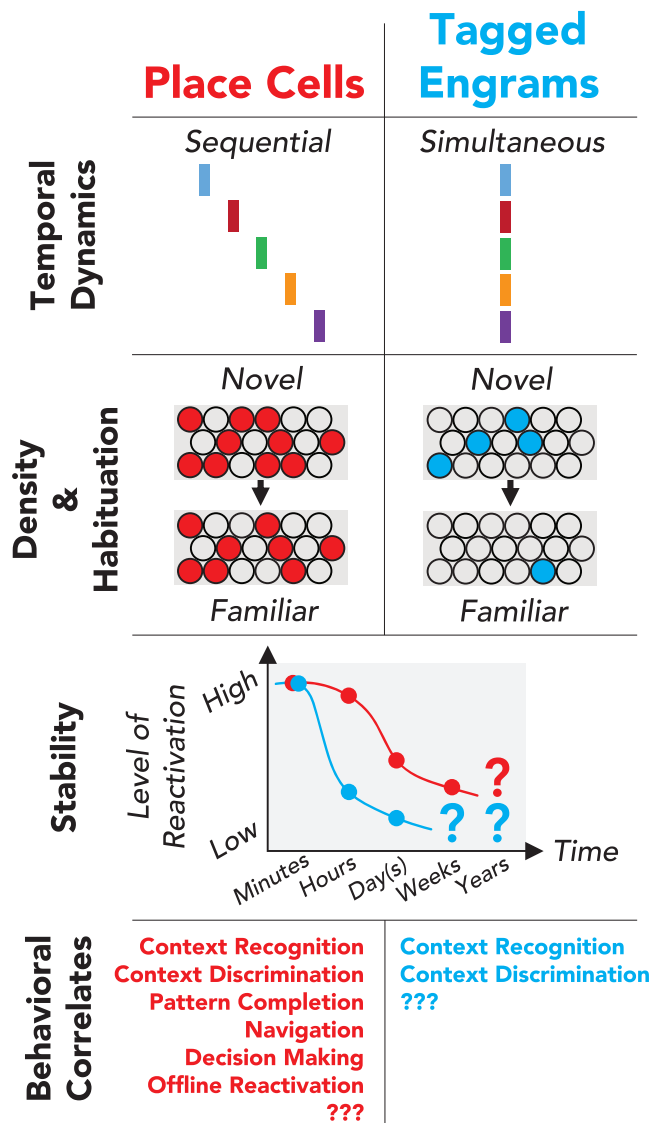


Figure 1. Comparing and Contrasting Hippocampal Place Cells and Engram-Tagged (Immediate Early-Gene-Expressing) Neurons
Place cell activity has precise temporal structure during both exploration and rest, whereas engram-tagged neurons are simultaneously and experimentally reactivated. Place cell density appears moderate, and this density of active place cells is relatively stable in any given context. Conversely, engram-tagged cells in the hippocampus are sparse, with familiar contexts exhibiting low levels of tagged expression. Engram cells exhibit considerably less stability in their context-dependent reinstatement over time as compared to place cells, although both are highly unstable with time. Remote time points for reactivation of experience-dependent engram cells remain unknown. While there are overlapping behavioral correlates of place and engram cell activity, place cell research has led the field in its correlation to behavior.

However, long-term monitoring of the stability of place cell representations across repeated visits on the timescale of weeks, now possible due to advances in *in vivo* imaging approaches in mice, suggests that there exists a hitherto unappreciated high degree of instability in the spatial representation of a familiar environment (Ziv et al., 2013; but, also see (Gonzalez et al., 2019). If only a fraction (~15%) of place cells show stability

across several weeks, it becomes more difficult to draw a direct connection between memory recall and a completely stable spatial representation. It is possible that a small fraction of stable place cells can serve as a partial cue to reinstate the full representation of memory through a process of pattern completion in downstream regions; however, this view is challenged by a recent study examining the physiological nature of engram cells in the hippocampus, which is discussed below (Tanaka et al., 2018). Thus, while place cell studies have provided insight into the anatomical organization and potential memory mechanisms of the hippocampus, we, like many others, struggle to reconcile these potential spatial coding properties with the core role of the system as a memory storage device (Tanaka, 2020). Further, it is important, both through hypothesis and experiments, to attempt to identify the rules of transformation that allow simultaneous activation of hippocampal engrams to generate appropriate patterns of downstream activation and behavior (Lisman et al., 2017). Perhaps then, we should reconsider what the activity of hippocampal neurons during memory formation and recall truly represents and how place cells that have driven much of the thinking in the field for the last 50 years can inform us about the hippocampus as a memory system (Figure 1).

Instantiating the Hippocampal Index

The hippocampal memory indexing theory posits that the hippocampus does not “contain” the episodic memory itself; rather, it generates a code or “index” that binds neuronal activity patterns underlying an experiential event, which is stored across distributed neocortical (and potentially subcortical) modules (Teyler and DiScenna, 1985, 1986; Teyler and Rudy, 2007). In other words, the hippocampus encodes a linked representation of brain activity at the time of an experience or episode, which can subserve subsequent recall via activation of that hippocampal representation. What is presumed to make these patterns of activity unique from other experience-induced patterns in the brain, such as ensemble activity in the sensory cortex activated by a stimulus, is their conjunctive and associational nature and the ability of the hippocampal ensemble to reinstate the original spatial and temporal patterns of cortical/subcortical activity of an experience (McClelland et al., 1995; Teyler and Rudy, 2007). Important to note is that the indexing theory is not mutually exclusive to the cognitive map theory. Instead, it simply remains agnostic to what, if anything, the hippocampal neurons involved in memory indexing must represent in terms of behaviorally relevant information; spatial coding would be acceptable if these neurons had properties consistent with that of an index, as summarized and presented in Figure 2. In the following and subsequent sections, we elaborate on these features and discuss how the brain’s circuit architecture supports a view of hippocampal function through the lens of indexing.

Engrams as Indices

Numerous studies have now shown that photoactivation of a sparse hippocampal engram drives IEG activity in select downstream brain regions thought to be involved in the original learning (e.g., Ramirez et al., 2013, 2015; Roy et al., 2017). Such observations, together with the reinstatement of behavior following optogenetic engram stimulation, support the idea that the hippocampus is capable of indexing and triggering

Key Features of Hippocampal Memory Indexing Theory

Sparse & Highly Connected

- i. The hippocampal index is a sparse, compressed, conjunctive representation, which is functionally connected to distributed cortical (and subcortical) modules encoding the experience.

Integrative & Discriminative

- ii. Episodic indexes integrate cognitive, visceral and affective states encoded in cortical and subcortical circuits.
- iii. Can maintain distinct indexes for similar experiences encoded in overlapping associative cortical networks.

Flexible & Efficient

- iv. Cortical and subcortical modules may be flexibly represented in multiple “hippocampal loci” and the same hippocampal loci may index multiple cortical modules.
- v. Partial experiential input within or to the hippocampus (via pattern completion) may reactivate neocortical modules that have encoded the original experience.
- vi. Hippocampal loops serve as routes via which indexes facilitate hippocampal-cortical and subcortical communication.
- vii. Repeated registration (reinforcement) of an experiential event acts to strengthen the hippocampal index of the cortical array associated with that event.

memory recall by reinstating learning-dependent activity in memory-related extrahippocampal brain systems. However, increased IEG induction in extrahippocampal structures following artificial activation of engram-bearing hippocampal cells does not necessarily indicate that these are the precise extrahippocampal neurons involved in the original learning. Moreover, specific controls, such as untagged, context-exposed and nonreinforced animals, are often essential to address issues of memory versus performance; indeed, animals may be able to use alternative learning or generalization strategies to achieve task-dependent behavior (e.g., [Wiltgen et al., 2010](#)), even in the absence of the hippocampus (for discussion, see [Maren et al., 2013](#)). So, what is the evidence for learning-specific and hippocampus-dependent reinstatement of neural activity? To this end, one study has shown that photoinhibition of learning-tagged CA1 pyramidal cells resulted in the reduction of fear behavior in a shock-associated context and that this coincided with reduced reinstatement of c-Fos expression, specifically in other c-Fos-tagged and, presumably, engram-bearing cortical and subcortical cells of the brain ([Tanaka et al., 2014](#)). In a separate study ([Guo et al., 2018](#)), it was found that contextual fear

Figure 2. Key Features of Hippocampal Memory Indexing Theory

learning increased mossy fiber synaptic contacts of tagged engram-bearing dentate granule cells (DGCs) with parvalbumin-positive (PV⁺) stratum lucidum inhibitory neurons (SLINs) to a significantly greater extent than a random population of DGCs. This engram-dependent recruitment of PV⁺ SLINs returned to pre-learning levels with time-dependent memory generalization. By genetically enhancing the coupling of engram-bearing DGCs with PV⁺ SLINs, the authors increased feed-forward inhibition in DG-CA3 circuitry and stabilized the hippocampal engram. Critically, this was shown to confer optogenetic behavioral reinstatement and context-specific reactivation of a distributed fear memory trace in hippocampal-cortical-subcortical networks at remote time points. Collectively, these findings mirror natural recall, insofar as contextual fear memory retrieval in the original learning context is associated with the specific reactivation of learning-dependent tagging in the hippocampus and some extrahippocampal targets. However, formal demonstration for how hippocampus may in fact coordinate extrahippocampal reinstatement in an experience-dependent manner is absent.

In light of understanding hippocampal engram functions through the lens of indexing,

it is important to emphasize that although behavioral reinstatement does not equate to neural reinstatement, the behavioral outcomes of optogenetic manipulations of hippocampal engrams appear experience dependent. For example, as noted above, stimulation of contextual fear-conditioning-tagged cells in the DG results in increased freezing in a safe (no shock) context (e.g., [Liu et al., 2012](#)). However, if such stimulation of the DG occurs for neurons that were tagged following the extinction of fear in a shock-associated context, then this manipulation results in reduced freezing in a shock-associated context and decreased spontaneous recovery of contextual fear ([Lacagnina et al., 2019](#)). Likewise, inhibition of context-fear-tagged DG cells attenuates freezing in a shock-associated context ([Tanaka et al., 2014](#)), but inhibition of extinction-tagged DG cells can increase defensive responding in a previously extinguished context ([Lacagnina et al., 2019](#)). These experience-specific findings are complemented by other studies where the behavioral response (beyond defensive behavior) of DG engram reactivation reflects the valence of the reinforcing stimuli associated the context or engram (e.g., [Ramirez et al., 2015](#); [Redondo et al., 2014](#)). Also, consider that simply reactivating engram cells

that were tagged during homecage exploration or exposure to a context in which shock never occurred does not appear to induce abnormal locomotion or overt defensive behaviors (e.g., [Ghandour et al., 2019](#)).

While indexing may explain the capacity for photoactivation of tagged hippocampal engram cells to trigger memory-specific behavior in different contexts, reinstatement of behavior is often notably less than what would be expected through natural recall (i.e., returning the animal to the original training context). In the framework of indexing, we propose there are number of reasons why this may be the case beyond the fact that natural recall is presumably most effective in reactivating the index. Importantly, the abovementioned tagging systems, while experimentally time locked, are still thought to open a window of tagging that may be on the order of at least several hours. Thus, when artificially reactivating these cells, it is possible that the experimenter may also be triggering activation of other nonspecific indices and/or experiences such as activity in the homecage and pre- or post-training handling. These patterns are not specific to the primary learning episode in question and thus may compete for behavioral expression. Contextual stimuli present in the test context may also trigger interference as well, acting as external inhibitors. Thereby, a number of controls (e.g., nonreinforced, homecage) for better isolating and assessing the degree of experienced-dependent behavioral reinstatement should be performed. Additionally, hippocampal indices not only are proposed to encode the relevant brain systems activated during an experience but also may represent the sequential patterns of such activation ([Buzsáki and Tingley, 2018](#)). Current methods of optogenetic reactivation of hippocampal engram cells lack such sequence-based reactivation ([Carrillo-Reid et al., 2019](#)), beyond what is inherently structured in the linkage of hippocampal engram-bearing circuits. Further technological advancements, which may better constrain the window of tagging to a particular experience or may be able to reactivate cells in sequence-dependent manners, are crucial to improve the readouts and interpretation of this reinstatement.

Is the hippocampus alone in its potential capacity for indexing? Association cortices such as the sensory association cortex and EC may also exhibit indexing properties due to their convergence of sensory input, thereby contributing to a hierarchical indexing scheme ([McClelland et al., 1995](#)). Thus, the hippocampus may serve to some extent as an index of indices in the EC and other input structures as information is routed in and then back out again. Assuming such hippocampal signals can be decompressed to reinstate activity in cortical and subcortical nuclei (as noted above), an exact one-to-one representation in the hippocampus of cortical modules (for example) seems unlikely and may not be necessary. In fact, convergence of neural activity into the hippocampus might be essential for its abilities to form conjunctive contextual representations ([Rudy and O'Reilly, 1999](#)). Other critical targets of the hippocampus, such as the retrosplenial cortex (RSC) ([Cowansage et al., 2014](#); [Mao et al., 2018](#)) or lateral septum (LS) ([Bender et al., 2015](#); [Besnard et al., 2019](#); [Tingley and Buzsáki, 2018](#)), may also maintain such convergence of processing and may thereby be part of a hierarchical indexing scheme, assuming these structures are capable of reinstating patterns of experience-specific assembly

patterns. Indeed, one study found that reactivation of cells of the RSC that were tagged at conditioning is sufficient to induce behavioral expression of fear, even in the absence of a fully functional hippocampus ([Cowansage et al., 2014](#)). Importantly, this study showed that optogenetic activation of the RSC engram, like natural recall, recruited overlapping downstream circuits in the amygdala and EC, demonstrative of reinstatement of experiential activity. Thus, indexing may not necessarily be unique to the hippocampus; however, the hippocampus may be uniquely positioned to index episodic events, given the significantly greater extent to which it integrates complex and hierarchical sensory information from across the brain (see sections below), as well as due to its discriminative coding and circuit architecture. Unpublished findings indicating that reactivation of engram-tagged neural structures, outside the hippocampus, does not equally reinstate behavior may support the particular importance of hippocampal indexing ([Roy et al., 2019](#)).

Memory Indexing in Humans?

Electrophysiological studies in humans have suggested that the human hippocampus also possesses properties consistent with indexing. For example, in epileptic patients with depth electrodes implanted into the medial temporal lobe, free recall of an audiovisual experience was shown to follow the selective reactivation of hippocampal and EC cells that were active during the prior experience ([Gelbard-Sagiv et al., 2008](#)). Likewise, successful retrieval in an object association task coincided with reinstatement of spiking activity in hippocampal and EC cells, hippocampal activity preceding EC firing, and decoding analyses of EC activity predicting the identity of the recalled object ([Staresina et al., 2019](#)). Other intracranial recordings have shown that behavioral recall was linked to coordinated hippocampal-lateral temporal cortical representational reinstatement of item-context associations ([Pacheco Estefan et al., 2019](#)). In this study, hippocampal reinstatement preceded that seen in the neocortex, and hippocampal-cortical gamma phase synchrony during hippocampal reinstatement predicted neocortical reinstatement. Moreover, these findings are mirrored in additional studies that have found memory-related reinstatement in the human hippocampus is underscored by a sparse and distributed set of active cells ([Wixted et al., 2014, 2018](#)).

Human functional magnetic resonance imaging (fMRI) studies support a similar interpretation. For example, one fMRI study ([Harand et al., 2012](#)) reported that hippocampal BOLD (blood-oxygen-level-dependent) activity during an episodic learning experience matched its activity at recall (i.e., recognition of previously shown visual cues), particularly when subjects reported the remembering of episodic details of the learning event. Interestingly, this episodic reinstatement of hippocampal activity occurred for remembered cues at 3 days and even 3 months following learning. Moreover, for successful retrieval of experiential memory (in tasks such as object recall and recognition), regions including the RSC, parahippocampal cortex (PHC), perirhinal cortex (PRC), and prefrontal cortex (PFC) have all been shown to exhibit recall-dependent reinstatement along with or in close temporal proximity to hippocampal reinstatement, suggestive of hippocampal-dependent routing (e.g., [Arnold et al., 2018](#); [Jonker et al., 2018](#); [Schultz et al., 2019](#)). Again, while reinstatement and temporal patterns of activation alone do not

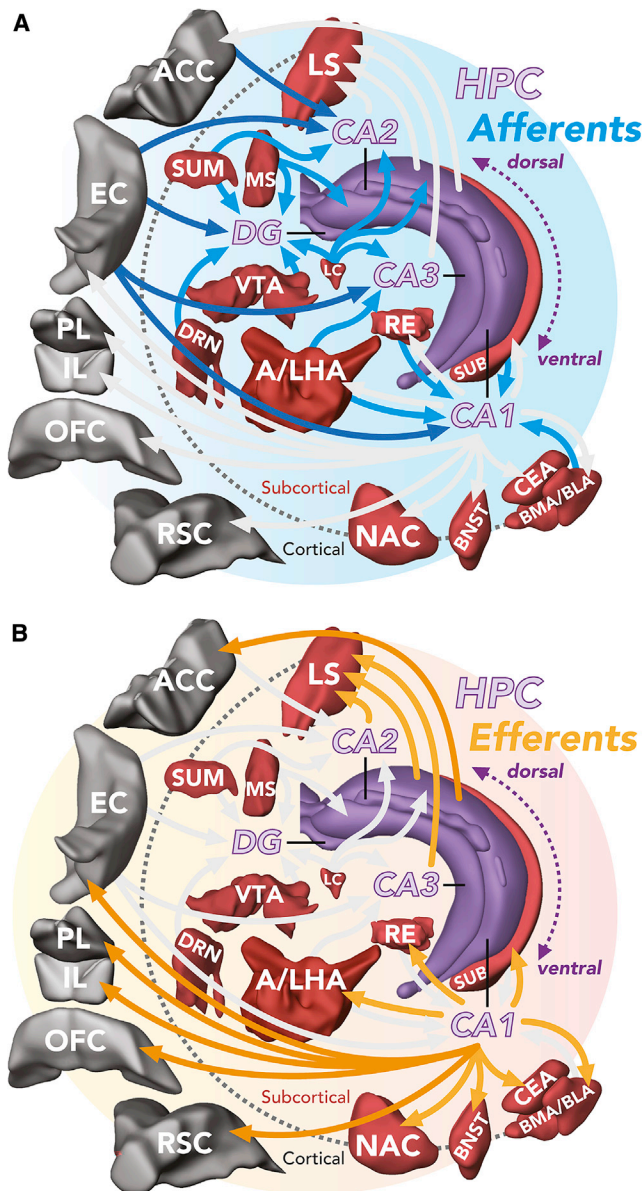


Figure 3. Hippocampal (DG-CA3-CA2-CA1) Circuit Architecture and Anatomical Loops Permit Flexible Integration and Routing of Experiential Information

(A) Examples of hippocampal inputs (blue arrows).

(B) Examples of hippocampal outputs (orange arrows). Note that the projections shown are not exhaustive.

Brain regions include the anterior cingulate cortex (ACC), bed nucleus of the stria terminalis (BNST), basolateral/basomedial amygdala (BLA/BMA), central amygdala (CEA), dentate gyrus (DG), dorsal raphe nucleus (DRN), entorhinal cortex (EC), cornu ammonis regions (CA1–CA3), infralimbic cortex (IL), locus coeruleus (LC), anterior/lateral hypothalamic area (A/LHA), lateral septum (LS), medial septum (MS), nucleus accumbens (NAC), orbital frontal cortex (OFC), prelimbic cortex (PL), nucleus reuniens (RE), retrosplenial cortex (RSC), subiculum (SUB), supramammillary nucleus (SUM), and ventral tegmental area (VTA). Brain region images were generated using Brain Explorer 2.0 (Lein et al., 2007).

demonstrate indexing, these findings are consistent with data from rodents and leave open the possibility that future experiments may directly test this idea in humans.

An Integrated Circuit Model of the Hippocampal Index

In the decades since the introduction of the hippocampal memory indexing theory, considerable advances have been made in our understanding of the complexity and diversity of hippocampal circuits. If experience-tagged hippocampal engrams serve as episodic indices, how might the circuit architecture of the brain be employed for encoding and recall? To these ends, the conjunctive, sparse, and compressed code generated in the DG via pattern separation would support indexing by minimizing memory interference (Figure 2, feature i) (Cayco-Gajic and Silver, 2019; Hainmueller and Bartos, 2020; Knierim and Neunuebel, 2016; McHugh et al., 2007), while DG outputs, together with direct EC inputs (alongside the diverse afferents described below), onto CA3 cells would bias attractor dynamics in the recurrent network to store an experience as a new memory, or catalyze the retrieval or updating of a previously encoded memory by pattern completion (Figure 2, features ii–iv). Accordingly, the experience is registered in a sparse hippocampal code or engram composed of principal cells (and inhibitory neurons [INs]) across the different subregions (DG, CA3, CA2, and CA1), with their coordinated activity permitting intra- and extra-hippocampal reinstatement of the original experience through dynamic routing (Figure 2, features v–vii; Figures 3 and 4). We elaborate on this idea with recent examples in the next sections.

Dynamic Routing: Hippocampal Afferents

In this framework, the DG-CA3-CA2-CA1 circuit can be perceived as a template of nodes, with each node receiving diverse intra- and extra-hippocampal inputs allowing for the integrative, dynamic, and flexible incorporation of cognitive and visceral information into memory representations (Figure 3A). These properties would enable the hippocampus to participate in many “types” of memories—spatial, goal-oriented, social, future-planning—all which may comprise diverse episodic experiences. For example, direct long-range GABAergic projections from the lateral hypothalamus (LH) to CA3 have been recently identified (Zhou et al., 2019a); these neurons synapse onto CA3 interneurons and appear to have critical functions in tasks of object recognition and discrimination, revealing a direct pathway by which CA3 may integrate endocrine signals in learning and memory processes. CA3 neurons also incorporate locus coeruleus (LC) input, and one study found that LC projections to dorsal CA3 (dCA3; but not to CA1 or DG) are required for encoding (but not retrieval, which may be mediated by CA3-CA1 [see below]) of a contextual representation (as assessed by distance traveled in a previously explored context or via single-trial contextual fear conditioning) (Wagatsuma et al., 2018). Additionally, parallel circuits projecting from neurons in the supramammillary nucleus (SUM) to the DG and CA2 have been found to carry contextual and social novelty signals, respectively, allowing hypothalamic sculpting of hippocampal memory in a task-specific manner (Chen et al., 2020; see also Li et al., 2020; Hashimoto et al., 2018). These recent discoveries broaden our understanding of the diversity of mammalian hippocampal afferents and point to multiple sources via which the hippocampus may integrate signals for memory formation or recall. Activity of these distinct sets of inputs (alongside other important inputs, including from the amygdala and anterior cingulate cortex), recruited based on ongoing experience, may govern which hippocampal routes are deployed for encoding and/or recall.

Dynamic Routing: Hippocampal Efferents

Further arguing against a simple sequential processing loop, it is clear that each node within the DG-CA3-CA2-CA1 circuit projects to distinct outputs (Figure 3B). In the framework of index theory, these outputs may be flexibly deployed by engram cells to reinstate an experience (whether that experience is appetitive, aversive, etc.). An example of this potential selective routing can be found in ventral CA1 (vCA1) neurons (Ciocchi et al., 2015). In this study, vCA1 cells were tracked based on their projections to the PFC, nucleus accumbens (NAc), and amygdala during behavior, revealing that activity in these neurons were task and pathway dependent. These findings critically suggest that signals out of CA1 are not uniformly transmitted to its targets; rather, it supports the idea of that efferent hippocampal signals are routed based on task and mnemonic demands. With particular relevance to indexing, dorsal CA1 (dCA1) tetrode recordings paired with circuit-specific optogenetics have shown that expression of conditioned place preference (CPP) depends on the reinstatement of dCA1 representations that were active during training (Trouche et al., 2019). Furthermore, CPP expression is lost if dCA1 terminals in NAc are photoinhibited, despite dCA1 pyramidal cells maintaining their context-dependent cell assemblies during testing (see also Zhou et al., 2019b).

This routing ability is not restricted to CA1; CA3 output neurons may route information via projections to CA1, CA2, or the DLS (dorsolateral septum). Indeed, brain-wide analyses of co-activated circuits accompanying contextual fear discrimination identified a CA3-DLS module (Besnard et al., 2019). This pathway appears to recruit somatostatin (SST)⁺ DLS cells to gate conditioned freezing, as *in vivo* calcium imaging found SST⁺ DLS cell activity reliably discriminated shock-associated versus safe contexts. In support of these findings, optogenetic-terminal-specific silencing of dCA3 terminals in dCA1 and DLS has suggested distinct roles for dCA3-CA1 and dCA3-DLS projections to contextual fear learning (or consolidation) and discrimination, respectively (Besnard et al., 2020).

For CA2, its efferent network positions it strongly for memories involving social recognition, discrimination, and aggression (Middleton and McHugh, 2019). Indeed, CA2 (and CA3) efferents do not uniformly regulate discrimination (Raam et al., 2017). Optogenetic experiments have demonstrated that anterior CA2/dCA2 neurons targeting dCA1 are essential for novel object recognition, but not for discrimination between novel and familiar conspecifics. The opposite was true for dCA2/dCA3 projections to posterior CA1. Photoinhibition of dCA2/dCA3 projections to the DLS were instead shown to somewhat enhance social discrimination, but with no effect on object discrimination or recognition. In social behaviors, axons from dCA2 neurons targeting ventral hippocampus were shown to be critically involved in maintaining memory of a familiar animal (Meira et al., 2018; Raam et al., 2017), while pharmacogenetic inhibition of CA2 terminals in the DLS attenuates social aggression (Leroy et al., 2018), a pathway that, when active, appeared to invoke DLS-innervation of the ventromedial hypothalamus to drive attack behavior.

In total, multiple nonoverlapping engrams within these diverse hippocampal routes may compete through updating or ongoing learning to modify behavioral output. For example, two-photon (2P) imaging of DG and CA3 engrams *in vivo* revealed that the

updating of a reward location promoted activity remapping in CA1 and CA3, but not in the DG (Hainmueller and Bartos, 2018). Recent work has also demonstrated that contextual fear extinction recruits a distinct DG engram from that encoding the original context-shock association, which reduces levels of freezing in the training context but can be overcome by the original engram to induce relapse (Lacagnina et al., 2019). Likewise, prolonged optogenetic or chemogenetic reactivation of a DG fear memory engram in the training context without the unconditioned stimulus promoted extinction of the conditioned response (Khalaf et al., 2018). Of course, the hippocampus is not unique in this type of broad connectedness; other hubs in the brain, including the claustrum (Jackson et al., 2020) and the thalamus (Halassa and Sherman, 2019), may surpass it in terms of total connectivity. However, these data suggest that the hippocampus is capable of integrating and routing complex information from a variety of source structures, supporting its role in the binding of cognition and emotion to subserve memory (Figure 4A).

Dynamic Routing: Inhibitory Microcircuits

How might these diverse communication channels running through the hippocampus be managed? Hippocampal INs are well positioned to function as arbiters of information flow in the hippocampus, as they target different cellular compartments of principal neurons, are reciprocally connected with other interneurons, and project locally within and across different subregions and project locally within and across different subregions and lamellae and out of the hippocampus to association cortices and subcortical circuits (long-range INs) (Caroni, 2015). Moreover, hippocampal INs modulate neuronal excitability, summation of excitatory inputs, and neuronal firing in addition to generation of network oscillations (theta and gamma oscillations) and as such are thought to play critical roles in local circuit computations underlying exploration and encoding, action selection, memory consolidation, retrieval, and reinstatement (Cardin, 2018; Makino et al., 2019; Roux and Buzsáki, 2015; Sosa et al., 2018). Indeed, recent studies have uncovered a diverse population of INs in CA1 and CA3 that exert perisomatic and dendritic inhibition on DGs and are modulated by SWRs.

Local INs may regulate information flow within a hippocampal subregion by biasing recruitment of principal cells, thereby creating parallel channels as evidenced in a study that identified biased PV⁺ basket cell (BC) connectivity with deep and superficial CA1 neurons of the ventral hippocampus (Lee et al., 2014). The authors found that PV⁺ BCs preferentially innervated deep CA1 pyramidal neurons but received greater excitatory inputs from superficial CA1 pyramidal neurons. At the level of output, PV⁺ BCs exert greater inhibition onto basolateral amygdala (BLA)-projecting deep CA1 neurons than those that projected to the PFC and, in turn, received greater excitatory input from PFC than BLA. These data suggest that PV⁺ BCs do not uniformly inhibit CA1; instead, it is likely that PV⁺ BC-principal cell microcircuits bias information flow to distinct vCA1 outputs, including PFC, BLA, NAc, DLS, and LH (serving dynamic and flexible routing). Local INs may also differentially regulate theta phase-locking and burst firing of CA1 neurons through somatic or dendritic inhibition, respectively (Royer et al., 2012). Because burst firing of pyramidal cells is thought to increase synaptic communication by increasing excitation of downstream targets, local INs may modulate CA1 outputs through this mechanism

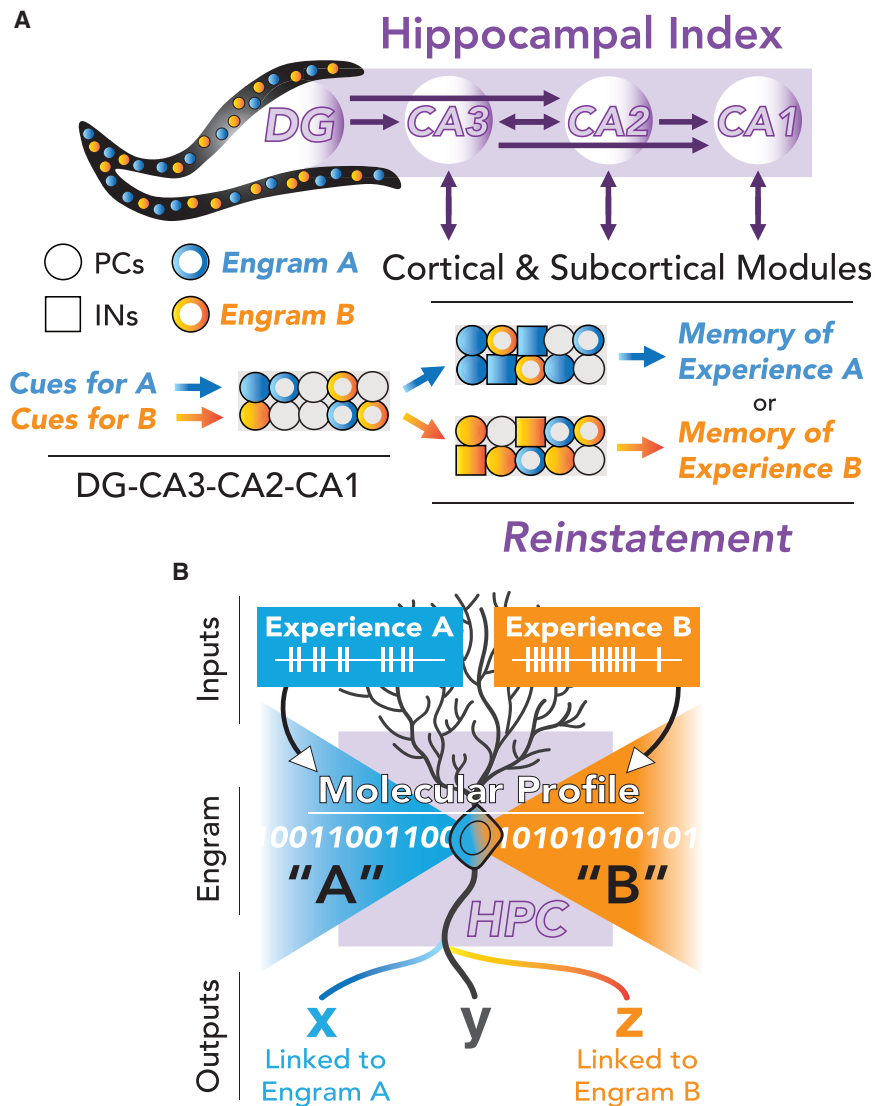


Figure 4. Hippocampal Engrams May Index Experience to Reinstatement

(A) Distinct experiences are thought to be encoded within DG-CA3-CA2-CA1 connections, with engram-bearing cells being functionally linked to other neurons for the same episode. Recall can then be driven by partial input (cues) that reinstate activity (filled-in circles/squares) within hippocampal circuits to drive extrahippocampal reinstatement via its diverse outputs and connectivity to other engram-bearing cells. PCs, principal cells; INs, inhibitory neurons.

(B) Hippocampal cells may register more than one experience in distinct patterns of connectivity prescribed by activity-dependent gene expression (shown here as combinations of 1 s and 0 s).

press CA1 cholecystinin-positive (CCK⁺) interneurons that relay feed-forward inhibition from CA3 to CA1 *ex vivo* (Basu et al., 2016). This disinhibition of CA1 interneurons induced enhanced dendritic spiking within a specific temporal window, a mechanism by which sensory information and mnemonic information arriving from excitatory LEC inputs and CA3, respectively, may be integrated. More recently, a class of long-range inhibitory neuronal nitric oxide synthase (nNOS)-expressing cells in CA1 (LINC neurons) has been identified that project both locally and extra-hippocampally (Christenson Wick et al., 2019). These neurons inhibit superficial and deep principal cells and other INs in CA1 and project to diverse extrahippocampal targets, including the tenia tecta, subiculum, hypothalamus, olfactory bulb, and EC. Optogenetic activation of LINC neurons entrained hippocampal oscillations and hippocampal-frontal cortex (tenia tecta) coherence.

(Graves et al., 2012; Lisman, 1997; Takahashi and Magee, 2009). Importantly, rhythmic optogenetic activation of PV⁺ INs in CA1 to mimic that seen during learning enhanced theta, delta, and ripple oscillations; stabilized functional connectivity between CA1 neurons; and reliably promoted ensemble reactivation (Ognjanovski et al., 2014). The exact role these oscillations play in the ability of an index to reactivate downstream targets remains largely untested; however, evidence suggests the coherence or coordination of activity they provide may facilitate both the encoding and recall of memories across various structures by ensuring temporal coordination of activity (Buzsáki, 2015; Corcoran et al., 2016; Igarashi et al., 2014; Joo and Frank, 2018; Lin et al., 2017; Makino et al., 2019; Wirt and Hyman, 2019).

Pioneering *in vivo* recordings and imaging studies in rats identified extensively connected INs with extrahippocampal (septum, subiculum, para- and pre-subiculum, and RSC) projections that coordinate network oscillations (Bonifazi et al., 2009; Jinno, 2009). Long-range inhibitory projection neurons of the LEC sup-

Thus, converging evidence has begun to illuminate how cell physiology, activity-dependent gene expression, and microcircuit connectivity support hippocampal engram-cell-dependent indexing (i.e., encoding of experiences and routing of information to mediate reinstatement). We discuss these features of engram cell identity next.

Index Cell Identity

Given the long-standing focus on rodent hippocampal place cells, an obvious question is what aspect of contextual memory is encoded within the hippocampal engram. Behavioral studies using variations of contextual fear conditioning suggest that the hippocampus generates a conjunctive representation of multimodal sensory information formed through physical exploration of a context (Fanselow, 2000; see also Krasne et al., 2015). For example, one study preexposed rats to either the conditioning context or independent features of that context and found context fear after an immediate shock is facilitated only when

these multimodal cues are presented together, suggesting that the hippocampus represents the conjunction of the cues defining the context (Rudy and O'Reilly, 1999). Indeed, temporary pharmacological inactivation of the hippocampus during the context preexposure prevents the contextual fear conditioning of immediate shock (Matus-Amat et al., 2004). Past studies of IEG expression in the hippocampus support this view (e.g., Huff et al., 2006; Zhu et al., 1997); the strongest IEG response is achieved when a novel combination of multimodal cues is presented to the animal. Conversely, hippocampal IEG expression is weak or nonexistent when a highly habituated stimulus is given. Note that immediate shock upon context entry in the absence of preexposure (and extensive postexposure) does not appear to elevate levels of IEGs in the hippocampus relative to a habituated homecage (see also Erwin et al., 2020). These data suggest that IEG-expressing engram neurons may not necessarily or exclusively store spatial information, as rodents will have active place cells even in the most familiar of contexts, but rather hippocampal circuits detect novelty in the combination of sensory cues and encode it as a contextual representation supporting the episodic experience. Indeed, optogenetic stimulation of CA1 neurons tagged in a novel context the day prior to immediate shock delivery in the same context, but not a different context, resulted in retrieval of the contextual fear memory (Ghandour et al., 2019; see also Ramirez et al., 2013). Thus, a memory engram, defined by active principal cells during contextual learning, may preferentially encode conjunctive contextual information, as opposed to specific locations that could be biased by a specific cue or subset of cues.

Physiology

Key insights into the precise identity of engram-bearing cells came from *in vivo* recording of CA1 neurons in a mouse in which c-Fos-positive neurons labeled during a novel context exposure were tagged with channelrhodopsin 2 (ChR2) and subsequently optically identified (Tanaka et al., 2018). As expected, ~50% of all CA1 pyramidal cells could be classified as place cells; however, only one-quarter of these place cells also expressed c-Fos (optogenetically identified). In short, engram cells were place cells, but only one-quarter of place cells were engram cells. During memory encoding, these engram-bearing (c-Fos) cells are distinguished by higher mean firing rates (as also seen in a calcium imaging study; Ghandour et al., 2019), repetitive bursts of action potentials at the theta frequency, and higher entrainment by the local fast gamma oscillation compared to the non-c-Fos-expressing place cells, again highlighting the role inhibitory circuits and oscillations may play in the formation of the index. Interestingly, when mice were returned to the context the next day, c-Fos-positive engram neurons, while remaining place cells (meaning they still demonstrated a reliable in-session spatially receptive field), showed a much higher degree of spatial instability compared to the encoding session (remapping) than the c-Fos-negative place cell population. These data can be seen as paradoxical; how is it that the neurons shown to be capable of reinstating context-appropriate behavior show relatively lower spatial specificity than the remaining active cells? Importantly, when only firing rate (and not location) was considered, it was clear that the engram cells faithfully encoded contextual identity, but not specific location. A return to the encoding context resulted in c-Fos-positive neurons reinstating their

average firing rates, which were highly correlated between the first and second visits, while the firing rates in a distinct context were strongly altered. It worth noting that this strong correlation of activity emerges as soon as animal is placed in the environment, suggesting their activity could support rapid retrieval of contextual memory, consistent with the indexing theory. Further, these findings of a unique physiology suggest the importance of the temporal relationship between input from CA3 and the EC in triggering CA1 pyramidal cell plasticity and activity *in vivo* (Bittner et al., 2017; Ketz et al., 2013).

Complementary results were also found in a physiological study in which c-Fos-positive CA1 neurons were inhibited during recall (Trouche et al., 2016). In this study, engram neurons, defined by c-Fos expression associated with the acquisition of a cocaine-rewarded CPP, were labeled with an inhibitory opsin. Inactivation of this ensemble during a subsequent recall session reduced CPP behavior and, interestingly, led to a global remapping of the c-Fos-negative active place cell population. Together, these data suggest that the role of the c-Fos-positive place cells is to serve as a context-specific memory index and that their activity is crucial for the stable reinstatement of a more detailed spatial map, consisting of the remainder of the place cell population, that would permit animals precise navigation.

While it may seem odd at first that the neurons indispensable for inducing memory recall in CA1 show spatial instability, recent computational modeling lends support to this view (Benna and Fusi, 2019). Based on an assumption that the hippocampus encodes correlations of incoming sensory information, similar to the interpretation from contextual conditioning and IEG studies, the model predicted instability in the spatial representation of the hippocampus. Their ultrametric tree-like network generated sparse and compressed representations of inputs to efficiently store uncorrelated patterns in a hippocampal-like network. When spatial navigation in a 2D open field is simulated, activities of hippocampal cells in the model exhibit strong modulation by the animal's location within the environment (i.e., place cells). However, similar to the experimental observations above, these place fields significantly remapped between epochs in the same environment, suggesting instability of firing location as a reflection of correlation coding rather than spatial coding. Taken together, these studies support a view that activity of the hippocampal engram reflects more than just space and suggest at least a subset of neurons are dedicated to capturing the conjunctive correlations that define the larger context of the experience.

Activity-Dependent Regulation of Gene Expression and Connectivity

Hippocampal engrams are generated and maintained by strengthening or modification of synapses among activated cells within and across subregions. One study found that c-Fos-tagged CA3 cells preferentially responded to stimulation of engram-tagged DGs (Ryan et al., 2015), results indicative of experience-driven connectivity of DG-CA3. Likewise, context-fear-dependent increases in the number and size of spines in engram-bearing cells of CA1 coincide with direct input from engram-tagged cells from CA3 (Choi et al., 2018). Additionally, DG engram cells were shown to exhibit greater connectivity with stratum lucidum PV⁺ INs than non-engram DG cells (Guo et al., 2018). These observations have motivated investigations

into how developmental programs and activity-dependent gene expression prescribe engram formation. First, principal neurons may have differing propensities toward recruitment into engrams based on developmentally programmed intrinsic firing properties and connectivity (Cembrowski and Spruston, 2019; Soltesz and Losonczy, 2018). Second, activity-dependent transcription factors and combinations thereof enable neurons to read patterns of neural activity and transcribe molecular specifiers of connectivity to facilitate strengthening or modification of synapses (Tyssowski et al., 2018). For example, cyclic adenosine monophosphate (cAMP)-response-element-binding protein (CREB)-overexpression studies have revealed that enhancing basal activity and excitability of principal cells in the hippocampus (or subsets of amygdalar neurons, etc.) prior to learning can bias the allocation and tagging process to these cells without altering the overall size of the engram per se (Josselyn and Frankland, 2018; Josselyn and Tonegawa, 2020). A recent report using RNA sequencing of engram-tagged DG cells (following contextual fear conditioning) identified a unique learning-dependent genetic profile for engram-bearing cells, with CREB-dependent transcription networks being differentially regulated and required for consolidation (Rao-Ruiz et al., 2019). Interestingly, many of these genes were previously shown to regulate somatic inhibition (e.g., neuronal PAS domain protein 4 [NPAS4], proenkephalin [Penk], and brain-derived neurotrophic factor [BDNF]) (Bloodgood et al., 2013). Consistent with these findings, within the DG, contextual fear learning regulates CREB-dependent levels of neuropeptide Y (NPY) in SST⁺ hilar perforant path-associated (HIPP) interneurons, which may regulate SST⁺ HIPP-mediated feedback and feed-forward inhibition in the DG to govern the size of the engram (Raza et al., 2017; Stefanelli et al., 2016). Not surprisingly, different IEG transcription factors (including NPAS4) have been functionally implicated in linking principal cells with distinct IN networks to support engram formation (Sun et al., 2020). Thus, experiential input may drive unique IEG expression to govern functional allocation of engram-bearing cells to work in concert for memory expression (Figure 4B).

Hippocampal Index Stability and Memory Fidelity

Memory consolidation is thought to involve transformation and reorganization of hippocampal-linked cognate cortical representations and a gradual decay of the hippocampal engram over time (DeNardo et al., 2019; Guskjolen et al., 2018; Kitamura et al., 2017; Roy et al., 2017; Tayler et al., 2013; Winocur et al., 2007). Consolidated memories have been shown to generalize or lack detail, including the extent to which they may elicit visceral or physiological reactions, leading to the suggestion that the role the hippocampus plays in memory is to contribute episodic detail (Yonelinas et al., 2019). If this contribution relies on the initial memory trace or not remains a contested topic. For example, it has been argued that hippocampal memory traces remain, even for older memories (Moscovitch and Nadel, 2019), but others have argued there is a shift in the role the hippocampus from one of recall to reconstruction in the absence of the original trace, with the activity serving to index consolidated neocortical traces (Barry and Maguire, 2019a, 2019b). These observations raise the following questions: Is the hippocampal index always necessary for memory retrieval, or do cortical in-

dices acquire this function over time? Is the cortical index equivalent to the hippocampal index?

Several lines of evidence support the notion that the hippocampal index may be necessary for maintenance and retrieval of only highly precise memories. First, although hippocampal damage at remote time points may still permit retrieval of detailed contextual representations, the extent of memory retrieval is often much less robust (Wang et al., 2009), suggesting that extrahippocampal indices may not fully compensate for the loss of the hippocampal index. Indeed, while a similar degree of hippocampal activation is seen for recent and remote memories, the reactivation patterns are different (Tayler et al., 2013; see also Guskjolen et al., 2018). Second, artificially stabilizing the engram within DG-CA3 decreases remote memory generalization (and maintains behavioral reinstatement of remote DG engram stimulation; Guo et al., 2018), providing a direct link between maintenance of the hippocampal index and remote memory precision.

However, maintenance of separate hippocampal indices for all episodic memories is thought to require significantly greater capacity than is available to avoid memory interference (McClelland et al., 1995; Miller and Sahay, 2019; Skaggs and McNaughton, 1992). In CA1, the various methods employed to genetically label engram neurons typically capture ~20% of the pyramidal cells in the region (Tanaka et al., 2018), and *in vivo* imaging suggested that the identity of these allocated neurons shifts over the timescale of hours (Cai et al., 2016); thus, it appears that natural decay of hippocampal indices ensures the time-dependent reorganization of memory traces to support different degrees of generalization and generation of schema to facilitate new learning. It may be that some hippocampal indexes, perhaps for salient life events, are maintained for longer periods of time, thereby permitting recall of remote memories with high fidelity.

The integrity and composition of the cortical indices depends on how competition for representation of episodic memories and abstraction of statistical commonalities across ensembles dictate the balance between preservation of details versus generation of schema to facilitate memory generalization. This may involve time-dependent changes in the exact number of cells and patterns of efferent connectivity of cortical ensembles and linkage of distinct engrams of separate experiences via some degree of overlapping and synchronous activation (during recall or reconsolidation) of engram-bearing cells (Abdou et al., 2018; DeNardo et al., 2019; Kitamura et al., 2017; Ohkawa et al., 2015; Oishi et al., 2019; Pignatelli et al., 2019; Ramirez et al., 2013; Redondo et al., 2014).

While no one model can explain all the current data, from the perspective of engrams and indexing, we favor the hypothesis of a time-dependent shift in the indexing function from the hippocampus to cortical traces concurrent with a silencing or loss of the original hippocampal index (Tonegawa et al., 2018). Ultimately, time-dependent shifts in hippocampus-dependent episodic detail may be useful in the development of experiential schemas and broader knowledge.

Hippocampal Dysfunction Indexopathies

Memory deficits and hippocampal dysfunction accompany traumatic brain injury, epilepsy, age-related cognitive decline,

Outstanding Questions

How are hippocampal indexes decompressed for accurate reinstatement?

How do patterns of activity prescribe connectivity of engram-bearing cells?

Future Directions

Large-scale recordings of cortical-hippocampal-subcortical networks during memory encoding and engram-mediated retrieval

In vivo imaging of connected engram cells in defined microcircuits

Figure 5. Outstanding Challenges for Hippocampal Indexing and Memory Research

Alzheimer's disease (AD), and numerous other psychiatric disorders, including posttraumatic stress disorder (PTSD) and schizophrenia (Besnard and Sahay, 2016; Haberman et al., 2017; Small et al., 2011). Can these disorders of experiential memory be classified as "indexopathies," insofar as they are marked by an inability to accurately or precisely encode or effectively implement hippocampus-dependent routing of information (i.e., indexing)? For example, recent work documented declining hippocampal and cortical reinstatement in aging individuals (Trelle et al., 2020). Disease- or aging-induced excitation-inhibitory imbalance in hippocampal circuits, which may impede indexing, may underlie much of these memory dysfunctions. Indeed, excitation-inhibition imbalance (hypo- or hyperactivity) at the level of CA1 (e.g., Oh et al., 2013) and CA3 (e.g., Simkin et al., 2015; Wilson et al., 2005) and loss of feed-forward inhibition in DG-CA3 (e.g., Guo et al., 2018) are associated with memory imprecision in preclinical models of aging and memory disorders. Human imaging studies have further reported similar activity changes (e.g., hyperactivity) of hippocampal structures (Haberman et al., 2017), such as in presymptomatic familial AD (FAD) individuals (Quiroz et al., 2010) or patients with amnesic mild cognitive impairment (Bakker et al., 2012).

Such cellular, circuit, and network-level alterations may disrupt the balance between pattern separation and pattern completion, thereby promoting aberrant index-dependent reinstatement and recall. What previously may have been subthreshold to trigger CA3-dependent memory recall prior to disease may be sufficient after disease onset, thereby promoting excessive reinstatement and memory expression in contexts that may not be optimal. For example, aberrant or excessive retrieval of past experiences has been suggested to underlie psychosis in schizophrenia (Tamminga et al., 2010). Additionally, degradation of flexible routing to extrahippocampal targets, due to connectivity losses in disease or injury, may also impede the abilities of the hippocampus to effectively integrate cortical and subcortical information for proper encoding and retrieval. Perhaps related to

such circuit loss, AD is considered, in part, a disease of memory retrieval failure (Leal and Yassa, 2018; Roy et al., 2016).

Promoting Indexing: New Directions in Therapy

Recent advances in technology and medicine have led to a number of new therapeutic avenues for memory disorders—strategies that may be effective, in part, because they promote or reestablish hippocampal indexing functions. For example, growing interest has centered on deep-brain and closed-loop feedback neuroprosthetics for symptom management in individuals when other lines of treatment have failed (Grosenick et al., 2015; Takeuchi and Berényi, 2020). Perhaps by restoring context-dependent routing (and thereby indexing), these real-time electrophysiological (or opto- or chemogenetic, potentially) methods could dynamically normalize aberrant activity or restore cell excitability in perturbed brain circuits (e.g., in hippocampal-amygdalar or hippocampal-prefrontal loops). Additionally, recent developments in targeted gene-editing approaches (Knott and Doudna, 2018) may permit molecular reallocation or respecification of connectivity aimed at promoting memory precision and accuracy. Indeed, quieting disease-related hyperexcited CA3 pyramidal cells may involve targeting feed-forward inhibitory mechanisms of DG-CA3 (Guo et al., 2018; Viana da Silva et al., 2019) or CA2-CA3 connections (Boehringer et al., 2017) or inhibiting aberrant LH-CA3 activity (Zhou et al., 2019a), for example. Other pharmaco- or gene therapies that promote neurogenesis in aging or disease states may also exist as beneficial therapeutic avenues for memory impairments (Miller and Sahay, 2019).

Novel treatments for memory impairments may not be limited to invasive techniques and may involve supplementing existing procedures to best tap into the indexing properties of the hippocampus. For example, although the use of mnemonic devices for memory treatments is not new, recent developments in technology, such as augmented reality or 3D interactive environments, may provide novel avenues for improving memory recall within and beyond the clinic. Indeed, the growing ubiquity of personal

handheld devices may make mobile reminders or mnemonic cues (to facilitate reinstatement of memory) for treatments or symptom management for memory impairments more accessible or specialized. When combined with psychological treatments in the clinic, these and the abovementioned possibilities may yield new successes in treatment-resistant memory disorders. Moving forward, indexing may be a useful framework for improving clinical therapies for memory dysfunction.

Conclusions: Moving Memory Forward

Perhaps the brain's most powerful search engine, the hippocampus, sits at the center of the acquisition and recall of episodic memory. While the mechanisms of how this is achieved have been the focus of decades of research across many species and disciplines, it is often challenging to relate disparate lines of inquiry. Here, we have highlighted human and animal work based on recent genetic, physiological, anatomical, and computational approaches that together support an expanded view of the hippocampal memory indexing theory. In particular, we argue that (1) the functional roles of putative hippocampal engram cells include indexing, which may facilitate detailed recall of episodic experiences; (2) this episodic recall is facilitated by the reinstatement of engram cell activity and in their experience-sculpted connectivity; (3) indexing may not be unique to the hippocampus, but the hippocampus may be uniquely positioned to index experiential memory; and (4) disease of the hippocampus may impede truly episodic memory by disrupting its capacity for precise context-specific reinstatement. Nonetheless, there remain a number of outstanding questions for the field and for future work (Figure 5). Future work that integrates these levels of analyses will be required to understand how the dynamics of information flow in the hippocampal circuit contributes to the encoding and recall processes it supports.

ACKNOWLEDGMENTS

T.D.G. acknowledges support from Harvard Brain Science Initiative. K.Z.T. acknowledges support from MEXT Grant-in-Aid for Young Scientists (19K16305), Grant-in-Aid for JSPS fellows (19J00974), and a Nakajima Foundation research grant. A.S. acknowledges support from NIH Biobehavioral Research Awards for Innovative New Scientists (BRAINS) 1-R01MH104175, NIH-NIA 1R01AG048908-01A1, NIH 1R01MH111729-01, the James and Audrey Foster MGH Research Scholar Award, the Ellison Medical Foundation New Scholar in Aging, the Whitehall Foundation, the Inscopix Decode Award, the NARSAD Independent Investigator Award, Ellison Family Philanthropic support, the Blue Guitar Fund, a Harvard Neurodiscovery Center/MADRC Center pilot grant award, an Alzheimer's Association research grant, the Harvard Stem Cell Institute (HSCI) development grant, and an HSCI seed grant. T.J.M. acknowledges support from MEXT Grant-in-Aid for Scientific Research (19H05646), MEXT Grant-in-Aid for Scientific Research on Innovative Areas (17H05591, 17H05986, and 19H05233), and the RIKEN Center for Brain Science.

REFERENCES

Abdou, K., Shehata, M., Choko, K., Nishizono, H., Matsuo, M., Muramatsu, S.-I., and Inokuchi, K. (2018). Synapse-specific representation of the identity of overlapping memory engrams. *Science* 360, 1227–1231.

Arnold, A.E.G.F., Ekstrom, A.D., and Iaria, G. (2018). Dynamic neural network reconfiguration during the generation and reinstatement of mnemonic representations. *Front. Hum. Neurosci.* 12, 292.

Aronov, D., Nevers, R., and Tank, D.W. (2017). Mapping of a non-spatial dimension by the hippocampal-entorhinal circuit. *Nature* 543, 719–722.

Bakker, A., Krauss, G.L., Albert, M.S., Speck, C.L., Jones, L.R., Stark, C.E., Yassa, M.A., Bassett, S.S., Shelton, A.L., and Gallagher, M. (2012). Reduction of hippocampal hyperactivity improves cognition in amnesic mild cognitive impairment. *Neuron* 74, 467–474.

Barry, D.N., and Maguire, E.A. (2019a). Consolidating the case for transient hippocampal memory traces. *Trends Cogn. Sci.* 23, 635–636.

Barry, D.N., and Maguire, E.A. (2019b). Remote memory and the hippocampus: a constructive critique. *Trends Cogn. Sci.* 23, 128–142.

Basu, J., Zaremba, J.D., Cheung, S.K., Hitti, F.L., Zemelman, B.V., Losonczy, A., and Siegelbaum, S.A. (2016). Gating of hippocampal activity, plasticity, and memory by entorhinal cortex long-range inhibition. *Science* 351, aaa5694.

Bender, F., Gorbati, M., Cadavieco, M.C., Denisova, N., Gao, X., Holman, C., Korotkova, T., and Ponomarenko, A. (2015). Theta oscillations regulate the speed of locomotion via a hippocampus to lateral septum pathway. *Nat. Commun.* 6, 8521.

Benna, M.K., and Fusi, S. (2019). Are place cells just memory cells? Memory compression leads to spatial tuning and history dependence. *bioRxiv*. <https://doi.org/10.1101/624239>.

Besnard, A., and Sahay, A. (2016). Adult hippocampal neurogenesis, fear generalization, and stress. *Neuropsychopharmacology* 41, 24–44.

Besnard, A., Gao, Y., TaeWoo Kim, M., Twarkowski, H., Reed, A.K., Langberg, T., Feng, W., Xu, X., Saur, D., Zweifel, L.S., et al. (2019). Dorsolateral septum somatostatin interneurons gate mobility to calibrate context-specific behavioral fear responses. *Nat. Neurosci.* 22, 436–446.

Besnard, A., Miller, S.M., and Sahay, A. (2020). Distinct dorsal and ventral hippocampal CA3 outputs govern contextual fear discrimination. *Cell Rep.* 30, 2360–2373.e5.

Bittner, K.C., Milstein, A.D., Grienberger, C., Romani, S., and Magee, J.C. (2017). Behavioral time scale synaptic plasticity underlies CA1 place fields. *Science* 357, 1033–1036.

Bloodgood, B.L., Sharma, N., Browne, H.A., Trepman, A.Z., and Greenberg, M.E. (2013). The activity-dependent transcription factor NPAS4 regulates domain-specific inhibition. *Nature* 503, 121–125.

Boehringer, R., Polygalov, D., Huang, A.J.Y., Middleton, S.J., Robert, V., Wintzer, M.E., Piskorowski, R.A., Chevaleyre, V., and McHugh, T.J. (2017). Chronic loss of CA2 transmission leads to hippocampal hyperexcitability. *Neuron* 94, 642–655.e9.

Bonifazi, P., Goldin, M., Picardo, M.A., Jorquera, I., Cattani, A., Bianconi, G., Represa, A., Ben-Ari, Y., and Cossart, R. (2009). GABAergic hub neurons orchestrate synchrony in developing hippocampal networks. *Science* 326, 1419–1424.

Burgess, N., and O'Keefe, J. (2011). Models of place and grid cell firing and theta rhythmicity. *Curr. Opin. Neurobiol.* 21, 734–744.

Buzsáki, G. (2015). Hippocampal sharp wave-ripple: a cognitive biomarker for episodic memory and planning. *Hippocampus* 25, 1073–1188.

Buzsáki, G., and Tingley, D. (2018). Space and time: the hippocampus as a sequence generator. *Trends Cogn. Sci.* 22, 853–869.

Cai, D.J., Aharoni, D., Shuman, T., Shobe, J., Biane, J., Song, W., Wei, B., Veshkini, M., La-Vu, M., Lou, J., et al. (2016). A shared neural ensemble links distinct contextual memories encoded close in time. *Nature* 534, 115–118.

Cardin, J.A. (2018). Inhibitory interneurons regulate temporal precision and correlations in cortical circuits. *Trends Neurosci.* 41, 689–700.

Caroni, P. (2015). Inhibitory microcircuit modules in hippocampal learning. *Curr. Opin. Neurobiol.* 35, 66–73.

Carrillo-Reid, L., Han, S., Yang, W., Akrouh, A., and Yuste, R. (2019). Controlling visually guided behavior by holographic recalling of cortical ensembles. *Cell* 178, 447–457.e5.

Cayco-Gajic, N.A., and Silver, R.A. (2019). Re-evaluating circuit mechanisms underlying pattern separation. *Neuron* 101, 584–602.

- Cembrowski, M.S., and Spruston, N. (2019). Heterogeneity within classical cell types is the rule: lessons from hippocampal pyramidal neurons. *Nat. Rev. Neurosci.* *20*, 193–204.
- Chen, S., He, L., Huang, A.J.Y., Boehringer, R., Robert, V., Wintzer, M.E., Polygalov, D., Weitemier, A.Z., Tao, Y., Gu, M., et al. (2020). A hypothalamic novelty signal modulates hippocampal memory. *Nature*, in press.
- Choi, J.-H., Sim, S.-E., Kim, J.-I., Choi, D.I., Oh, J., Ye, S., Lee, J., Kim, T., Ko, H.-G., Lim, C.-S., and Kaang, B.K. (2018). Interregional synaptic maps among engram cells underlie memory formation. *Science* *360*, 430–435.
- Christenson Wick, Z., Tetzlaff, M.R., and Krook-Magnuson, E. (2019). Novel long-range inhibitory nNOS-expressing hippocampal cells. *eLife* *8*, e46816.
- Ciocchi, S., Passecker, J., Malagon-Vina, H., Mikus, N., and Klausberger, T. (2015). Brain computation. Selective information routing by ventral hippocampal CA1 projection neurons. *Science* *348*, 560–563.
- Cohen, N.J., and Eichenbaum, H. (1993). *Memory, Amnesia, and The Hippocampal System* (MIT Press).
- Colgin, L.L., Leutgeb, S., Jezek, K., Leutgeb, J.K., Moser, E.I., McNaughton, B.L., and Moser, M.-B. (2010). Attractor-map versus autoassociation based attractor dynamics in the hippocampal network. *J. Neurophysiol.* *104*, 35–50.
- Corcoran, K.A., Frick, B.J., Radulovic, J., and Kay, L.M. (2016). Analysis of coherent activity between retrosplenial cortex, hippocampus, thalamus, and anterior cingulate cortex during retrieval of recent and remote context fear memory. *Neurobiol. Learn. Mem.* *127*, 93–101.
- Cowsavage, K.K., Shuman, T., Dillingham, B.C., Chang, A., Golshani, P., and Mayford, M. (2014). Direct reactivation of a coherent neocortical memory of context. *Neuron* *84*, 432–441.
- DeNardo, L.A., Liu, C.D., Allen, W.E., Adams, E.L., Friedmann, D., Fu, L., Guenther, C.J., Tessier-Lavigne, M., and Luo, L. (2019). Temporal evolution of cortical ensembles promoting remote memory retrieval. *Nat. Neurosci.* *22*, 460–469.
- Denny, C.A., Kheirbek, M.A., Alba, E.L., Tanaka, K.F., Brachman, R.A., Laughman, K.B., Tomm, N.K., Turi, G.F., Losonczy, A., and Hen, R. (2014). Hippocampal memory traces are differentially modulated by experience, time, and adult neurogenesis. *Neuron* *83*, 189–201.
- Eichenbaum, H., Otto, T., and Cohen, N.J. (1994). Two functional components of the hippocampal memory system. *Behav. Brain Sci.* *17*, 449–472.
- Erwin, S.R., Sun, W., Copeland, M., Lindo, S., Spruston, N., and Cembrowski, M.S. (2020). A sparse, spatially biased subtype of mature granule cell dominates recruitment in hippocampal-associated behaviors. *Cell Rep.* *31*, 107551.
- Fanselow, M.S. (2000). Contextual fear, gestalt memories, and the hippocampus. *Behav. Brain Res.* *110*, 73–81.
- Fanselow, M.S., and Dong, H.-W. (2010). Are the dorsal and ventral hippocampus functionally distinct structures? *Neuron* *65*, 7–19.
- Foster, D.J. (2017). Replay comes of age. *Annu. Rev. Neurosci.* *40*, 581–602.
- Gelbard-Sagiv, H., Mukamel, R., Harel, M., Malach, R., and Fried, I. (2008). Internally generated reactivation of single neurons in human hippocampus during free recall. *Science* *322*, 96–101.
- Ghandour, K., Ohkawa, N., Fung, C.C.A., Asai, H., Saitoh, Y., Takekawa, T., Okubo-Suzuki, R., Soya, S., Nishizono, H., Matsuo, M., et al. (2019). Orchestrated ensemble activities constitute a hippocampal memory engram. *Nat. Commun.* *10*, 2637.
- Gonzalez, W.G., Zhang, H., Harutyunyan, A., and Lois, C. (2019). Persistence of neuronal representations through time and damage in the hippocampus. *Science* *365*, 821–825.
- Graves, A.R., Moore, S.J., Bloss, E.B., Mensh, B.D., Kath, W.L., and Spruston, N. (2012). Hippocampal pyramidal neurons comprise two distinct cell types that are countermodulated by metabotropic receptors. *Neuron* *76*, 776–789.
- Grosenick, L., Marshel, J.H., and Deisseroth, K. (2015). Closed-loop and activity-guided optogenetic control. *Neuron* *86*, 106–139.
- Guenther, C.J., Miyamichi, K., Yang, H.H., Heller, H.C., and Luo, L. (2013). Permanent genetic access to transiently active neurons via TRAP: targeted recombination in active populations. *Neuron* *78*, 773–784.
- Guo, N., Soden, M.E., Herber, C., Kim, M.T., Besnard, A., Lin, P., Ma, X., Cepko, C.L., Zweifel, L.S., and Sahay, A. (2018). Dentate granule cell recruitment of feedforward inhibition governs engram maintenance and remote memory generalization. *Nat. Med.* *24*, 438–449.
- Guskjolen, A., Kenney, J.W., de la Parra, J., Yeung, B.A., Josselyn, S.A., and Frankland, P.W. (2018). Recovery of “lost” infant memories in mice. *Curr. Biol.* *28*, 2283–2290.e3.
- Haberman, R.P., Branch, A., and Gallagher, M. (2017). Targeting neural hyperactivity as a treatment to stem progression of late-onset Alzheimer’s disease. *Neurotherapeutics* *14*, 662–676.
- Hainmueller, T., and Bartos, M. (2018). Parallel emergence of stable and dynamic memory engrams in the hippocampus. *Nature* *558*, 292–296.
- Hainmueller, T., and Bartos, M. (2020). Dentate gyrus circuits for encoding, retrieval and discrimination of episodic memories. *Nat. Rev. Neurosci.* *21*, 153–168.
- Halassa, M.M., and Sherman, S.M. (2019). Thalamocortical circuit motifs: a general framework. *Neuron* *103*, 762–770.
- Harand, C., Bertran, F., La Joie, R., Landeau, B., Mézange, F., Desgranges, B., Peigneux, P., Eustache, F., and Rauchs, G. (2012). The hippocampus remains activated over the long term for the retrieval of truly episodic memories. *PLoS ONE* *7*, e43495.
- Hashimoto, Y., Karube, F., Yanagawa, Y., Fujiyama, F., and Kano, M. (2018). Supramammillary nucleus afferents to the dentate gyrus co-release glutamate and GABA and potentiate granule cell output. *Cell Rep.* *25*, 2704–2715.e4.
- Howard, M.W., and Eichenbaum, H. (2015). Time and space in the hippocampus. *Brain Res.* *1621*, 345–354.
- Huff, N.C., Frank, M., Wright-Hardesty, K., Sprunger, D., Matus-Amat, P., Higgins, E., and Rudy, J.W. (2006). Amygdala regulation of immediate-early gene expression in the hippocampus induced by contextual fear conditioning. *J. Neurosci.* *26*, 1616–1623.
- Igarashi, K.M., Lu, L., Colgin, L.L., Moser, M.-B., and Moser, E.I. (2014). Coordination of entorhinal-hippocampal ensemble activity during associative learning. *Nature* *510*, 143–147.
- Jackson, J., Smith, J.B., and Lee, A.K. (2020). The anatomy and physiology of claustrum-cortex interactions. *Annu. Rev. Neurosci.* *43*, 231–247.
- Jinno, S. (2009). Structural organization of long-range GABAergic projection system of the hippocampus. *Front. Neuroanat.* *3*, 13.
- Jonker, T.R., Dimsdale-Zucker, H., Ritchey, M., Clarke, A., and Ranganath, C. (2018). Neural reactivation in parietal cortex enhances memory for episodically linked information. *Proc. Natl. Acad. Sci. USA* *115*, 11084–11089.
- Joo, H.R., and Frank, L.M. (2018). The hippocampal sharp wave-ripple in memory retrieval for immediate use and consolidation. *Nat. Rev. Neurosci.* *19*, 744–757.
- Josselyn, S.A., and Frankland, P.W. (2018). Memory allocation: mechanisms and function. *Annu. Rev. Neurosci.* *41*, 389–413.
- Josselyn, S.A., and Tonegawa, S. (2020). Memory engrams: recalling the past and imagining the future. *Science* *367*, eaaw4325.
- Kesner, R.P., and Rolls, E.T. (2015). A computational theory of hippocampal function, and tests of the theory: new developments. *Neurosci. Biobehav. Rev.* *48*, 92–147.
- Ketz, N., Morkonda, S.G., and O’Reilly, R.C. (2013). Theta coordinated error-driven learning in the hippocampus. *PLoS Comput. Biol.* *9*, e1003067.
- Khalaf, O., Resch, S., Dixsaut, L., Gorden, V., Glauser, L., and Gräff, J. (2018). Reactivation of recall-induced neurons contributes to remote fear memory attenuation. *Science* *360*, 1239–1242.

- Kitamura, T., Ogawa, S.K., Roy, D.S., Okuyama, T., Morrissey, M.D., Smith, L.M., Redondo, R.L., and Tonegawa, S. (2017). Engrams and circuits crucial for systems consolidation of a memory. *Science* 356, 73–78.
- Knierim, J.J., and Neunuebel, J.P. (2016). Tracking the flow of hippocampal computation: pattern separation, pattern completion, and attractor dynamics. *Neurobiol. Learn. Mem.* 129, 38–49.
- Knott, G.J., and Doudna, J.A. (2018). CRISPR-Cas guides the future of genetic engineering. *Science* 361, 866–869.
- Krasne, F.B., Cushman, J.D., and Fanselow, M.S. (2015). A Bayesian context fear learning algorithm/automaton. *Front. Behav. Neurosci.* 9, 112.
- Lacagnina, A.F., Brockway, E.T., Crovetti, C.R., Shue, F., McCarty, M.J., Sattler, K.P., Lim, S.C., Santos, S.L., Denny, C.A., and Drew, M.R. (2019). Distinct hippocampal engrams control extinction and relapse of fear memory. *Nat. Neurosci.* 22, 753–761.
- Leal, S.L., and Yassa, M.A. (2018). Integrating new findings and examining clinical applications of pattern separation. *Nat. Neurosci.* 21, 163–173.
- Lee, S.-H., Marchionni, I., Bezaire, M., Varga, C., Danielson, N., Lovett-Barron, M., Losonczy, A., and Soltesz, I. (2014). Parvalbumin-positive basket cells differentiate among hippocampal pyramidal cells. *Neuron* 82, 1129–1144.
- Lein, E.S., Hawrylycz, M.J., Ao, N., Ayres, M., Bensinger, A., Bernard, A., Boe, A.F., Boguski, M.S., Brockway, K.S., Byrnes, E.J., et al. (2007). Genome-wide atlas of gene expression in the adult mouse brain. *Nature* 445, 168–176.
- Leroy, F., Park, J., Asok, A., Brann, D.H., Meira, T., Boyle, L.M., Buss, E.W., Kandel, E.R., and Siegelbaum, S.A. (2018). A circuit from hippocampal CA2 to lateral septum disinhibits social aggression. *Nature* 564, 213–218.
- Li, Y., Bao, H., Luo, Y., Yoan, C., Sullivan, H.A., Quintanilla, L., Wickersham, I., Lazarus, M., Shin, Y.I., and Song, J. (2020). Supramammillary nucleus synchronizes with dentate gyrus to regulate spatial memory retrieval through glutamate release. *eLife* 9, 9.
- Lin, J.-J., Rugg, M.D., Das, S., Stein, J., Rizzuto, D.S., Kahana, M.J., and Lega, B.C. (2017). Theta band power increases in the posterior hippocampus predict successful episodic memory encoding in humans. *Hippocampus* 27, 1040–1053.
- Lisman, J.E. (1997). Bursts as a unit of neural information: making unreliable synapses reliable. *Trends Neurosci.* 20, 38–43.
- Lisman, J.E., and Otmakhova, N.A. (2001). Storage, recall, and novelty detection of sequences by the hippocampus: elaborating on the SOCRATIC model to account for normal and aberrant effects of dopamine. *Hippocampus* 11, 551–568.
- Lisman, J., Buzsáki, G., Eichenbaum, H., Nadel, L., Ranganath, C., and Redish, A.D. (2017). Viewpoints: how the hippocampus contributes to memory, navigation and cognition. *Nat. Neurosci.* 20, 1434–1447.
- Liu, X., Ramirez, S., Pang, P.T., Puryear, C.B., Govindarajan, A., Deisseroth, K., and Tonegawa, S. (2012). Optogenetic stimulation of a hippocampal engram activates fear memory recall. *Nature* 484, 381–385.
- MacDonald, C.J., Lepage, K.Q., Eden, U.T., and Eichenbaum, H. (2011). Hippocampal “time cells” bridge the gap in memory for discontinuous events. *Neuron* 71, 737–749.
- Makino, Y., Polygalov, D., Bolaños, F., Benucci, A., and McHugh, T.J. (2019). Physiological signature of memory age in the prefrontal-hippocampal circuit. *Cell Rep.* 29, 3835–3846.e5.
- Mao, D., Neumann, A.R., Sun, J., Bonin, V., Mohajerani, M.H., and McNaughton, B.L. (2018). Hippocampus-dependent emergence of spatial sequence coding in retrosplenial cortex. *Proc. Natl. Acad. Sci. USA* 115, 8015–8018.
- Maren, S., Phan, K.L., and Liberzon, I. (2013). The contextual brain: implications for fear conditioning, extinction and psychopathology. *Nat. Rev. Neurosci.* 14, 417–428.
- Matus-Amat, P., Higgins, E.A., Barrientos, R.M., and Rudy, J.W. (2004). The role of the dorsal hippocampus in the acquisition and retrieval of context memory representations. *J. Neurosci.* 24, 2431–2439.
- McClelland, J.L., McNaughton, B.L., and O’Reilly, R.C. (1995). Why there are complementary learning systems in the hippocampus and neocortex: insights from the successes and failures of connectionist models of learning and memory. *Psychol. Rev.* 102, 419–457.
- McHugh, T.J., Jones, M.W., Quinn, J.J., Balthasar, N., Coppari, R., Elmquist, J.K., Lowell, B.B., Fanselow, M.S., Wilson, M.A., and Tonegawa, S. (2007). Dentate gyrus NMDA receptors mediate rapid pattern separation in the hippocampal network. *Science* 317, 94–99.
- Meira, T., Leroy, F., Buss, E.W., Oliva, A., Park, J., and Siegelbaum, S.A. (2018). A hippocampal circuit linking dorsal CA2 to ventral CA1 critical for social memory dynamics. *Nat. Commun.* 9, 4163.
- Middleton, S.J., and McHugh, T.J. (2019). CA2: a highly connected intrahippocampal relay. *Annu. Rev. Neurosci.* 43, 55–72.
- Miller, S.M., and Sahay, A. (2019). Functions of adult-born neurons in hippocampal memory interference and indexing. *Nat. Neurosci.* 22, 1565–1575.
- Moscovitch, M., and Nadel, L. (2019). Sculpting remote memory: enduring hippocampal traces and vmPFC reconstructive processes. *Trends Cogn. Sci.* 23, 634–635.
- Moser, E.I., Moser, M.-B., and McNaughton, B.L. (2017). Spatial representation in the hippocampal formation: a history. *Nat. Neurosci.* 20, 1448–1464.
- Nadel, L., and Moscovitch, M. (1997). Memory consolidation, retrograde amnesia and the hippocampal complex. *Curr. Opin. Neurobiol.* 7, 217–227.
- Nadel, L., Hoscheidt, S., and Ryan, L.R. (2013). Spatial cognition and the hippocampus: the anterior-posterior axis. *J. Cogn. Neurosci.* 25, 22–28.
- Nakazawa, K., Quirk, M.C., Chitwood, R.A., Watanabe, M., Yeckel, M.F., Sun, L.D., Kato, A., Carr, C.A., Johnston, D., Wilson, M.A., and Tonegawa, S. (2002). Requirement for hippocampal CA3 NMDA receptors in associative memory recall. *Science* 297, 211–218.
- O’Keefe, J., and Dostrovsky, J. (1971). The hippocampus as a spatial map. Preliminary evidence from unit activity in the freely-moving rat. *Brain Res.* 34, 171–175.
- O’Keefe, J., and Nadel, L. (1978). *The Hippocampus as a Cognitive Map* (Oxford University Press).
- Ognjanovski, N., Maruyama, D., Lashner, N., Zochowski, M., and Aton, S.J. (2014). CA1 hippocampal network activity changes during sleep-dependent memory consolidation. *Front. Syst. Neurosci.* 8, 61.
- Oh, M.M., Oliveira, F.A., Waters, J., and Disterhoft, J.F. (2013). Altered calcium metabolism in aging CA1 hippocampal pyramidal neurons. *J. Neurosci.* 33, 7905–7911.
- Ohkawa, N., Saitoh, Y., Suzuki, A., Tsujimura, S., Murayama, E., Kosugi, S., Nishizono, H., Matsuo, M., Takahashi, Y., Nagase, M., et al. (2015). Artificial association of pre-stored information to generate a qualitatively new memory. *Cell Rep.* 11, 261–269.
- Oishi, N., Nomoto, M., Ohkawa, N., Saitoh, Y., Sano, Y., Tsujimura, S., Nishizono, H., Matsuo, M., Muramatsu, S.-I., and Inokuchi, K. (2019). Artificial association of memory events by optogenetic stimulation of hippocampal CA3 cell ensembles. *Mol. Brain* 12, 2.
- Pacheco Estefan, D., Sánchez-Fibla, M., Duff, A., Principe, A., Rocamora, R., Zhang, H., Axmacher, N., and Verschure, P.F.M.J. (2019). Coordinated representational reinstatement in the human hippocampus and lateral temporal cortex during episodic memory retrieval. *Nat. Commun.* 10, 2255.
- Pastalkova, E., Itskov, V., Amarasingham, A., and Buzsáki, G. (2008). Internally generated cell assembly sequences in the rat hippocampus. *Science* 321, 1322–1327.
- Pignatelli, M., Ryan, T.J., Roy, D.S., Lovett, C., Smith, L.M., Muralidhar, S., and Tonegawa, S. (2019). Engram cell excitability state determines the efficacy of memory retrieval. *Neuron* 101, 274–284.e5.
- Quiroz, Y.T., Budson, A.E., Celone, K., Ruiz, A., Newmark, R., Castrillón, G., Lopera, F., and Stern, C.E. (2010). Hippocampal hyperactivation in presymptomatic familial Alzheimer’s disease. *Ann. Neurol.* 68, 865–875.
- Raam, T., McAvoy, K.M., Besnard, A., Veenema, A.H., and Sahay, A. (2017). Hippocampal oxytocin receptors are necessary for discrimination of social stimuli. *Nat. Commun.* 8, 2001.

- Ramirez, S., Liu, X., Lin, P.-A., Suh, J., Pignatelli, M., Redondo, R.L., Ryan, T.J., and Tonegawa, S. (2013). Creating a false memory in the hippocampus. *Science* **341**, 387–391.
- Ramirez, S., Liu, X., MacDonald, C.J., Moffa, A., Zhou, J., Redondo, R.L., and Tonegawa, S. (2015). Activating positive memory engrams suppresses depression-like behaviour. *Nature* **522**, 335–339.
- Rao-Ruiz, P., Couey, J.J., Marcelo, I.M., Bouwkamp, C.G., Slump, D.E., Matos, M.R., van der Loo, R.J., Martins, G.J., van den Hout, M., van IJcken, W.F., et al. (2019). Engram-specific transcriptome profiling of contextual memory consolidation. *Nat. Commun.* **10**, 2232.
- Raza, S.A., Albrecht, A., Çalıřkan, G., Müller, B., Demiray, Y.E., Ludewig, S., Meis, S., Faber, N., Hartig, R., Schraven, B., et al. (2017). HIPP neurons in the dentate gyrus mediate the cholinergic modulation of background context memory salience. *Nat. Commun.* **8**, 189.
- Redondo, R.L., Kim, J., Arons, A.L., Ramirez, S., Liu, X., and Tonegawa, S. (2014). Bidirectional switch of the valence associated with a hippocampal contextual memory engram. *Nature* **513**, 426–430.
- Roux, L., and Buzsáki, G. (2015). Tasks for inhibitory interneurons in intact brain circuits. *Neuropharmacology* **88**, 10–23.
- Roy, D.S., Arons, A., Mitchell, T.I., Pignatelli, M., Ryan, T.J., and Tonegawa, S. (2016). Memory retrieval by activating engram cells in mouse models of early Alzheimer's disease. *Nature* **531**, 508–512.
- Roy, D.S., Muralidhar, S., Smith, L.M., and Tonegawa, S. (2017). Silent memory engrams as the basis for retrograde amnesia. *Proc. Natl. Acad. Sci. USA* **114**, E9972–E9979.
- Roy, D.S., Park, Y.-G., Ogawa, S.K., Cho, J.H., Choi, H., Kamensky, L., Martin, J., Chung, K., and Tonegawa, S. (2019). Brain-wide mapping of contextual fear memory engram ensembles supports the dispersed engram complex hypothesis. [bioRxiv. https://doi.org/10.1101/668483](https://doi.org/10.1101/668483).
- Royer, S., Zemelman, B.V., Losonczy, A., Kim, J., Chance, F., Magee, J.C., and Buzsáki, G. (2012). Control of timing, rate and bursts of hippocampal place cells by dendritic and somatic inhibition. *Nat. Neurosci.* **15**, 769–775.
- Rudy, J.W., and O'Reilly, R.C. (1999). Contextual fear conditioning, conjunctive representations, pattern completion, and the hippocampus. *Behav. Neurosci.* **113**, 867–880.
- Ryan, T.J., Roy, D.S., Pignatelli, M., Arons, A., and Tonegawa, S. (2015). Memory. Engram cells retain memory under retrograde amnesia. *Science* **348**, 1007–1013.
- Schacter, D.L., Eich, J.E., and Tulving, E. (1978). Richard Semon's theory of memory. *J. Verbal Learn. Verbal Behav.* **17**, 721–743.
- Schultz, H., Tibon, R., LaRocque, K.F., Gagnon, S.A., Wagner, A.D., and Starasina, B.P. (2019). Content tuning in the medial temporal lobe cortex: voxels that perceive, retrieve. *eNeuro* **6**, ENEURO.0291-19.2019.
- Semon, R.W. (1921). *The Mneme* (The Macmillan Company).
- Simkin, D., Hattori, S., Ybarra, N., Musial, T.F., Buss, E.W., Richter, H., Oh, M.M., Nicholson, D.A., and Disterhoft, J.F. (2015). Aging-related hyperexcitability in CA3 pyramidal neurons is mediated by enhanced A-type K⁺ channel function and expression. *J. Neurosci.* **35**, 13206–13218.
- Skaggs, W.E., and McNaughton, B.L. (1992). Computational approaches to hippocampal function. *Curr. Opin. Neurobiol.* **2**, 209–211.
- Small, S.A., Schobel, S.A., Buxton, R.B., Witter, M.P., and Barnes, C.A. (2011). A pathophysiological framework of hippocampal dysfunction in ageing and disease. *Nat. Rev. Neurosci.* **12**, 585–601.
- Soltész, I., and Losonczy, A. (2018). CA1 pyramidal cell diversity enabling parallel information processing in the hippocampus. *Nat. Neurosci.* **21**, 484–493.
- Sosa, M., Gillespie, A.K., and Frank, L.M. (2018). Neural activity patterns underlying spatial coding in the hippocampus. *Curr. Top. Behav. Neurosci.* **37**, 43–100.
- Squire, L.R., Stark, C.E.L., and Clark, R.E. (2004). The medial temporal lobe. *Annu. Rev. Neurosci.* **27**, 279–306.
- Starasina, B.P., Reber, T.P., Niediek, J., Boström, J., Elger, C.E., and Morrmann, F. (2019). Recollection in the human hippocampal-entorhinal cell circuitry. *Nat. Commun.* **10**, 1503.
- Stefanelli, T., Bertollini, C., Lüscher, C., Müller, D., and Mendez, P. (2016). Hippocampal somatostatin interneurons control the size of neuronal memory ensembles. *Neuron* **89**, 1074–1085.
- Strange, B.A., Witter, M.P., Lein, E.S., and Moser, E.I. (2014). Functional organization of the hippocampal longitudinal axis. *Nat. Rev. Neurosci.* **15**, 655–669.
- Sun, X., Bernstein, M.J., Meng, M., Rao, S., Sørensen, A.T., Yao, L., Zhang, X., Anikeeva, P.O., and Lin, Y. (2020). Functionally distinct neuronal ensembles within the memory engram. *Cell* **181**, 410–423.e17.
- Takahashi, H., and Magee, J.C. (2009). Pathway interactions and synaptic plasticity in the dendritic tuft regions of CA1 pyramidal neurons. *Neuron* **62**, 102–111.
- Takeuchi, Y., and Berényi, A. (2020). Oscillotherapeutics: time-targeted interventions in epilepsy and beyond. *Neurosci. Res.* **152**, 87–107.
- Tammimga, C.A., Stan, A.D., and Wagner, A.D. (2010). The hippocampal formation in schizophrenia. *Am. J. Psychiatry* **167**, 1178–1193.
- Tanaka, K.Z. (2020). Heterogeneous representations in the hippocampus. *Neurosci. Res.* Published online May 20, 2020. <https://doi.org/10.1016/j.neures.2020.05.002>.
- Tanaka, K.Z., and McHugh, T.J. (2018). The hippocampal engram as a memory index. *J. Exp. Neurosci.* **12**, 1179069518815942.
- Tanaka, K.Z., Pevzner, A., Hamidi, A.B., Nakazawa, Y., Graham, J., and Wiltgen, B.J. (2014). Cortical representations are reinstated by the hippocampus during memory retrieval. *Neuron* **84**, 347–354.
- Tanaka, K.Z., He, H., Tomar, A., Niisato, K., Huang, A.J.Y., and McHugh, T.J. (2018). The hippocampal engram maps experience but not place. *Science* **361**, 392–397.
- Taylor, K.K., Tanaka, K.Z., Reijmers, L.G., and Wiltgen, B.J. (2013). Reactivation of neural ensembles during the retrieval of recent and remote memory. *Curr. Biol.* **23**, 99–106.
- Taylor, T.J., and DiScenna, P. (1985). The role of hippocampus in memory: a hypothesis. *Neurosci. Biobehav. Rev.* **9**, 377–389.
- Taylor, T.J., and DiScenna, P. (1986). The hippocampal memory indexing theory. *Behav. Neurosci.* **100**, 147–154.
- Taylor, T.J., and Rudy, J.W. (2007). The hippocampal indexing theory and episodic memory: updating the index. *Hippocampus* **17**, 1158–1169.
- Tingley, D., and Buzsáki, G. (2018). Transformation of a spatial map across the hippocampal-lateral septal circuit. *Neuron* **98**, 1229–1242.e5.
- Tonegawa, S., Morrissey, M.D., and Kitamura, T. (2018). The role of engram cells in the systems consolidation of memory. *Nat. Rev. Neurosci.* **19**, 485–498.
- Trelle, A.N., Carr, V.A., Guerin, S.A., Thieu, M.K., Jayakumar, M., Guo, W., Nadiadwala, A., Corso, N.K., Hunt, M.P., Litovsky, C.P., et al. (2020). Hippocampal and cortical mechanisms at retrieval explain variability in episodic remembering in older adults. *eLife* **9**, 9.
- Trouche, S., Perestenko, P.V., van de Ven, G.M., Bratley, C.T., McNamara, C.G., Campo-Urriza, N., Black, S.L., Reijmers, L.G., and Dupret, D. (2016). Recoding a cocaine-place memory engram to a neutral engram in the hippocampus. *Nat. Neurosci.* **19**, 564–567.
- Trouche, S., Koren, V., Doig, N.M., Ellender, T.J., El-Gaby, M., Lopes-Dos-Santos, V., Reeve, H.M., Perestenko, P.V., Garas, F.N., Magill, P.J., et al. (2019). A hippocampus-accumbens tripartite neuronal motif guides appetitive memory in space. *Cell* **176**, 1393–1406.e16.
- Tulving, E. (2002). Episodic memory: from mind to brain. *Annu. Rev. Psychol.* **53**, 1–25.
- Tyssowski, K.M., DeStefino, N.R., Cho, J.-H., Dunn, C.J., Poston, R.G., Carty, C.E., Jones, R.D., Chang, S.M., Romeo, P., Wurzelmann, M.K., et al. (2018). Different neuronal activity patterns induce different gene expression programs. *Neuron* **98**, 530–546.e11.

- Valero, M., and de la Prida, L.M. (2018). The hippocampus in depth: a sublayer-specific perspective of entorhinal-hippocampal function. *Curr. Opin. Neurobiol.* *52*, 107–114.
- Viana da Silva, S., Zhang, P., Haberl, M.G., Labrousse, V., Grosjean, N., Blanchet, C., Frick, A., and Mulle, C. (2019). Hippocampal mossy fibers synapses in CA3 pyramidal cells are altered at an early stage in a mouse model of Alzheimer's disease. *J. Neurosci.* *39*, 4193–4205.
- Vinogradova, O.S. (2001). Hippocampus as comparator: role of the two input and two output systems of the hippocampus in selection and registration of information. *Hippocampus* *11*, 578–598.
- Wagatsuma, A., Okuyama, T., Sun, C., Smith, L.M., Abe, K., and Tonegawa, S. (2018). Locus coeruleus input to hippocampal CA3 drives single-trial learning of a novel context. *Proc. Natl. Acad. Sci. USA* *115*, E310–E316.
- Wang, S.-H., Teixeira, C.M., Wheeler, A.L., and Frankland, P.W. (2009). The precision of remote context memories does not require the hippocampus. *Nat. Neurosci.* *12*, 253–255.
- Wikenheiser, A.M., and Redish, A.D. (2015). Decoding the cognitive map: ensemble hippocampal sequences and decision making. *Curr. Opin. Neurobiol.* *32*, 8–15.
- Wilson, I.A., Ikonen, S., Gallagher, M., Eichenbaum, H., and Tanila, H. (2005). Age-associated alterations of hippocampal place cells are subregion specific. *J. Neurosci.* *25*, 6877–6886.
- Wiltgen, B.J., Sanders, M.J., Behne, N.S., and Fanselow, M.S. (2001). Sex differences, context preexposure, and the immediate shock deficit in Pavlovian context conditioning with mice. *Behav. Neurosci.* *115*, 26–32.
- Wiltgen, B.J., Zhou, M., Cai, Y., Balaji, J., Karlsson, M.G., Parivash, S.N., Li, W., and Silva, A.J. (2010). The hippocampus plays a selective role in the retrieval of detailed contextual memories. *Curr. Biol.* *20*, 1336–1344.
- Winocur, G., Moscovitch, M., and Sekeres, M. (2007). Memory consolidation or transformation: context manipulation and hippocampal representations of memory. *Nat. Neurosci.* *10*, 555–557.
- Wirt, R.A., and Hyman, J.M. (2019). ACC theta improves hippocampal contextual processing during remote recall. *Cell Rep.* *27*, 2313–2327.e4.
- Wixted, J.T., Squire, L.R., Jang, Y., Papesh, M.H., Goldinger, S.D., Kuhn, J.R., Smith, K.A., Treiman, D.M., and Steinmetz, P.N. (2014). Sparse and distributed coding of episodic memory in neurons of the human hippocampus. *Proc. Natl. Acad. Sci. USA* *111*, 9621–9626.
- Wixted, J.T., Goldinger, S.D., Squire, L.R., Kuhn, J.R., Papesh, M.H., Smith, K.A., Treiman, D.M., and Steinmetz, P.N. (2018). Coding of episodic memory in the human hippocampus. *Proc. Natl. Acad. Sci. USA* *115*, 1093–1098.
- Yonelinas, A.P., Ranganath, C., Ekstrom, A.D., and Wiltgen, B.J. (2019). A contextual binding theory of episodic memory: systems consolidation reconsidered. *Nat. Rev. Neurosci.* *20*, 364–375.
- Zhang, T.R., Larosa, A., Di Raddo, M.-E., Wong, V., Wong, A.S., and Wong, T.P. (2019). Negative memory engrams in the hippocampus enhance the susceptibility to chronic social defeat stress. *J. Neurosci.* *39*, 7576–7590.
- Zhou, W., He, Y., Rehman, A.U., Kong, Y., Hong, S., Ding, G., Yalamanchili, H.K., Wan, Y.-W., Paul, B., Wang, C., et al.; DDD study (2019a). Loss of function of NCOR1 and NCOR2 impairs memory through a novel GABAergic hypothalamus-CA3 projection. *Nat. Neurosci.* *22*, 205–217.
- Zhou, Y., Zhu, H., Liu, Z., Chen, X., Su, X., Ma, C., Tian, Z., Huang, B., Yan, E., Liu, X., and Ma, L. (2019b). A ventral CA1 to nucleus accumbens core engram circuit mediates conditioned place preference for cocaine. *Nat. Neurosci.* *22*, 1986–1999.
- Zhu, X.O., McCabe, B.J., Aggleton, J.P., and Brown, M.W. (1997). Differential activation of the rat hippocampus and perirhinal cortex by novel visual stimuli and a novel environment. *Neurosci. Lett.* *229*, 141–143.
- Ziv, Y., Burns, L.D., Cocker, E.D., Hamel, E.O., Ghosh, K.K., Kitch, L.J., El Gamil, A., and Schnitzer, M.J. (2013). Long-term dynamics of CA1 hippocampal place codes. *Nat. Neurosci.* *16*, 264–266.